

Berkeley Public Library
Board of Library Trustees

III Consent, Item A

Regular Meeting
January 12, 2011

MINUTES
6:30 p.m.

South Branch
1901 Russell Street

I. PRELIMINARY MATTERS

*A copy of the agenda packet and a digital recording of this meeting is accessible at
http://www.berkeleypubliclibrary.org/about_the_library/bolt/bolt.php*

A. Call to Order

The Regular meeting of January 12, 2011 was called to order by Chair Kupfer at 6:35 PM.

Present: Trustees Winston Burton, Abigail Franklin, Susan Kupfer and Darryl Moore.

Absent: Carolyn Henry-Golphin.

Also present: Donna Corbeil, Director of Library Services; Douglas Smith, Deputy Director; Dennis Dang, Library Admin Manager; Suzanne Olawski, Branch Library Manager; Debbie Carton, Art & Music Librarian; Eve Franklin, Administrative Secretary.

David Snyder – Berkeley Public Library Foundation

Mary Ann Merker, Civic Arts Commission

David Smippen, Consultant

B. Public Comments

1. Gene Bernardi, SuperBOLD – Spoke regarding Nuclear Free Berkeley Act waiver and RFID system.
2. Peter Warfield – Spoke regarding Nuclear Free Berkeley Act waiver and RFID system, interim services while the branches are closed, budget priorities and monitoring RFID system
3. David Snyder – Spoke regarding implementation of new RFID system, BranchVan, fiscal responsibilities and continuing services within Measure FF budget.

C. **Report from Library employees and Unions, Discussion of Staff Issues** – Debbie Carton, read a statement from SEIU 1021 (Attachment #1) in favor of a new building for the West Branch.

D. **Report from Board of Library Trustees**

Trustee Burton spoke regarding the State of California budget cuts effect on libraries and social services and the need to be proactive. Lots of serious challenges ahead.

Trustee Franklin reported Trustees will hold a closed session to discuss Director Corbeil's performance evaluation after which she and Trustee Burton will meet with the Library Director to provide the evaluation.

E. **Approval of Agenda**

R11-001 **Moved by Trustee Burton, seconded by Trustee Moore, to approve the agenda as presented.** Trustee Henry-Golphin absent. Motion passed unanimously.

II. CONSENT CALENDAR

R11-002 **Moved by Trustee Moore, seconded by Trustee Franklin, to approve Consent Calendar as presented.** Trustee Henry-Golphin absent. Motion passed unanimously.

A. **Approve minutes of December 8, 2010 Regular Meeting**

R11-003 **Moved by Trustee Moore, seconded by Trustee Franklin, to approve the minutes of the December 8, 2010 regular meeting of the Board of Library Trustees as presented.** Trustee Henry-Golphin absent. Motion passed unanimously.

B. **Resolution of Gratitude to Kathy E. Souza**

R11-004 Moved by Trustee Moore, seconded by Trustee Franklin, to approve the resolution expressing gratitude to Kathy E. Souza, who served as library assistant and library specialist for the Berkeley Public Library from March 1987 to December 2010. Trustee Henry-Golphin absent. Motion passed unanimously.

C. Closure of the Tool Lending Library for Annual Tool Maintenance From February 13 Through February 20, 2011

R11-005 Moved by Trustee Moore, seconded by Trustee Franklin, to adopt a resolution authorizing the closure of the Tool Lending Library from February 13 through February 20, 2011 and reopening on February 22, 2011. Trustee Henry-Golphin absent. Motion passed unanimously.

| |
|-----------------------------|
| III. ACTION CALENDAR |
|-----------------------------|

A. Authorization to Accept Recommendation of Selection Panel and Execute Contract for Measure FF Funded Public Art for Claremont and North Branch Libraries

David Snippen, Consultant provided an update of the process and showed renderings and samples of artwork from the finalists. (Attachment #2) Selection panel made up of: two members of the Board of Library Trustees, two members of the Landmark Preservation Commission, two members of the Civic Arts Commission, three neighborhood reps, and two library staff. The selection panel invited artists and curators (42 contacts) to participate. Sixteen proposals were received. Selection panel narrowed the field down to six semi-finalists who made sample pieces. Sample art was displayed at Claremont and North Branches. 52 comments were left at North, 3 at Claremont. Comments were distributed to the selection panel. The semi-finalists were interviewed and two were chosen as finalists. Both are local (East Bay) artists. The proposed art for Claremont is a metal "Book Shelves" guard rail on the ramp by Eric Powell. The proposed art for North is a quilt of trees in copper and stainless steel surrounding the public information slat wall in the hallway connecting the new and old buildings done by Marion Coleman. Both projects will offer graffiti protection.

R11_006 Moved by Trustee Moore, seconded by Trustee Franklin, to adopt a resolution authorizing the Library director to execute a contract with Eric Powell for the Claremont Branch public art project and with Marion Coleman for the North Branch public art project, in an amount not to exceed \$29,000 and \$38,000 respectively, for the period January 26, 2011 through July 30, 2012. Trustee Henry-Golphin absent. Motion passed unanimously.

B. Board of Library Trustee Budget Update and Establishing Priorities for FY 2011 & 2012

R11-007 Moved by Trustee Moore, seconded by Trustee Franklin, to adopt a resolution approving priorities for the fiscal year 2011 and 2012 Library budget development. Trustee Henry-Golphin absent. Motion passed unanimously.

Budget Priorities

- Confirm stability of operating budget and plan for future operational needs -- including establishing / maintaining a balanced budget.
- Monitor and manage bond funds (Measure FF)
- Maximize effectiveness of services
- Pursue establishment of a reserve fund

Chair Kupfer – What is the amount of State of California budget cuts affecting BPL? \$160,000.

Director Corbeil reported that every single program funded by the state has been eliminated except the California State Library, including: Public Library Foundation, Transaction Based Reimbursement, and the California Library Literacy. Our challenge will be to see what the impact will be on our programs and how we can mitigate it. The CLA has information about the budget cuts on their website and there will be a state-wide movement to try to reverse the cuts.

IV. INFORMATION REPORTS

- A. Update on the Branch Bond Program** – Anticipate it will take three weeks to close up and move out of the branches after the contracts are signed. Going to January 18th City Council for approval to go out to bid for Claremont and North.
- B. Recruitment Process to Fill Vacancy on Board of Library Trustees Created by Trustee Kupfer's Term End Effective May 13, 2011** There will be an Open House on February 1. Trustee Moore recommended inviting former BOLT Trustees. Trustee Franklin recommended inviting the Berkeley Public Library Foundation and Friends of the Library.
- C. January 2011 Monthly Report from Library Director**
4X2 Agenda – Trustees Franklin and Moore to attend, Trustee Burton will attend if Trustee Moore can't. Author's Dinner will be held on February 12.
- D. Library events:** Calendar of events and press releases for various Library programs are posted at <http://www.berkeleypubliclibrary.org>

I. AGENDA BUILDING

- A.** The next meeting will be a Regular Meeting held at 6:30 PM on Wednesday, February 9, 2011 at the South Branch Library, 1901 Russell Street, Berkeley.
1. Possible agenda topics:
 - Directors Performance Review in Closed Session
 - Mid-Year Budget report
 - Budget Workshop – March 9

II. ADJOURNMENT

- R11-008 Moved by Trustee Moore, seconded by Trustee Kupfer, to adjourn the regular meeting of the board at 7:35 PM.** Trustee Henry-Golphin absent. Motion passed unanimously.

SEIU Statement regarding West Branch Library

SEIU 1021 wishes to support the Berkeley Public Library's efforts to proceed with the construction of a new West Branch library.

It is our responsibility to make sure our workers are housed in safe environments. As with the South Branch library, the current West Branch building is simply not safe for employees or the public. The Facilities Master Plan of 2008 clearly states that:

"There is structural work necessary under the building due to damage from pests and water, and the remaining areas of original wood windows and trim are badly damaged."

"At the time of the addition the original building was not reinforced to resist earthquake forces nor was it tied into the addition. In addition there is considerable evidence of rot and decay in the cripple studs which compromises the vertical and lateral resistance of the building."

Until a new West Branch library exists, both employees and the public are working in and using an unsafe building. The current lawsuit has the potential to seriously postpone the project, putting all who enter it at risk.

The existing West Branch building has serious ADA noncompliance issues. The public restrooms do not comply with ADA regulations, and the story pit in the children's area makes 60% of the picture book collection inaccessible. West Branch cannot hire a staff member who needs a wheelchair, as the staff entrance, staff bathrooms, and the story pit are all inaccessible.

Although West Branch staff has managed to work creatively with the limited space they have, it is still not enough for present needs.

- West Branch is home to the award-winning Literacy program. This ground-breaking program has served as a model for many other libraries in establishing their own literacy programs, and it is at present squeezed into a space carved out from the library's meeting room. This space is not sufficient for Literacy's needs, and takes away from the branch's already limited space.
- More public access computers are needed, but there is no space to put them.
- The staff work space is not ergonomically sound, and one staff office lacks any ventilation.

It has been suggested that the library go back to the 1923 original building, which was a beautiful design. The original 1923 building was essentially replaced during the 1974 renovation. When the library looked into restoring the 1923 original, we learned that to do so we would have to redo the whole foundation. This means picking up the building, moving it back from the street, excavating from below, and moving the building forward again. This is not only extremely expensive, but the old building may not be able to stand the strain of being moved twice. To spend such a large portion of the funds allotted for this project is irresponsible. Those public funds are better put to use by creating a user-friendly building to support and build on the many services the library currently offers, with an eye to future needs of the community.

III Consent, Item A
Attachment 1

The present building is invisible even to community members. Many patrons have said, "I've lived in this neighborhood for 10 years and never knew there was a library here." West Branch's location is in many ways ideal: on a major thoroughfare, surrounded by active businesses, and with easier parking than at many other library locations. What the library needs is a visible presence in the community, a building that is attractive, inviting and noticeable.

A new building will solve all of these problems, and there should be no delay in that process.

The longer the project is postponed, the more it will cost, causing the branch to lose some of the services and equipment currently in the plans.

Debbie Carton, Art & Music Librarian and SEIU 1021 Steward

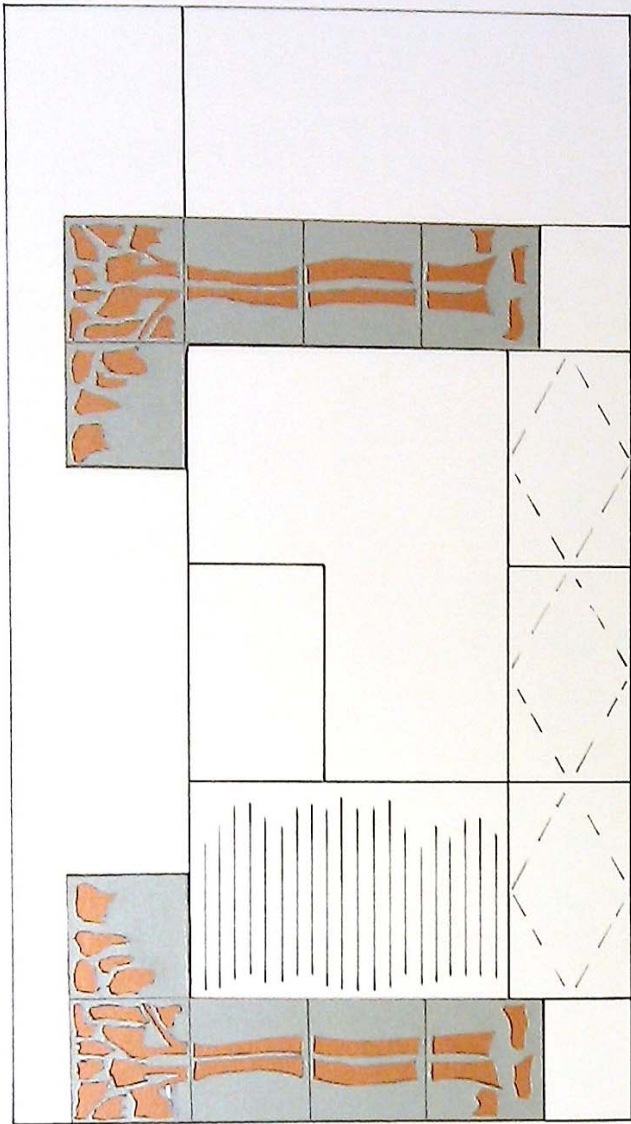
Berkeley Public Library
North Branch Public Art Proposal
Marion Coleman

A Patchwork of Trees is a segmented three part art installation of reverse approach metal quilts. The quilts designs will portray patchwork quilts using three months. Two of the quilts represent "Information Trees" and will mirror each other on each side of the Salt Wall display for public information brochures that will be located at Hall 114 North. The third "Transformation Tree" will be next to the entrance in Hall 114 West.

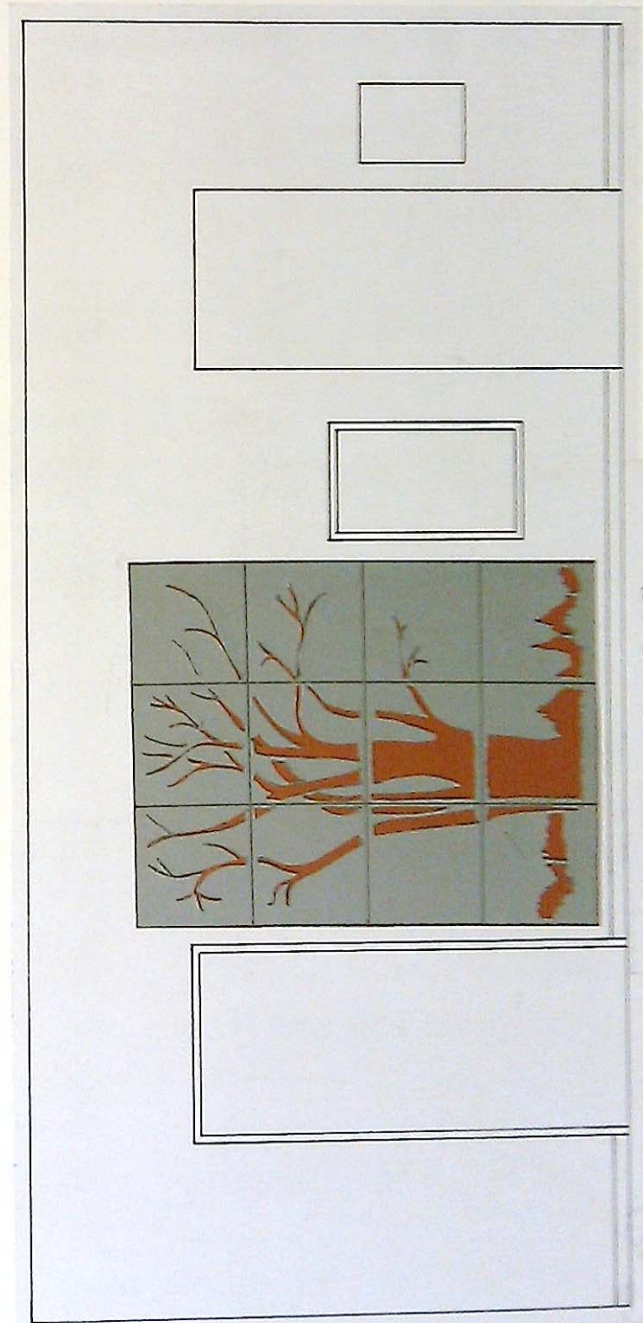
A Patchwork of Trees quilts will be designed and fabricated using copper as the primary color of the quilt. The top layer will be stainless steel. The top design will be the "Information Trees" and will mirror each other on each side of the Salt Wall display for public information brochures that will be located at Hall 114 North. This is a building technique where metal will be used like fabric. The layers will be joined together to resemble quilting. In creating quilting at the heart was layers of materials must be joined together to create the quilt. The overall dimensions of each of the "Information Trees" will be 24" H at the base x 36" x 48" H at the top. The "Transformation Tree" will be 24" H at the base x 36" x 48" H at the top.

The theme of trees is used to reflect the green nature of the North Berkeley community as well as paying tribute to the California Arts and Crafts movement where nature was used for inspiration. Artists know in the movement that painted trees and plants using metal and ceramics. Additionally the tree has symbolic connections with being and being and being and being and being and being. Lastly the patchwork quilts will contribute to a library connection with quilts and quilting.

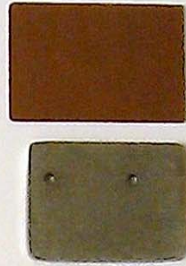
The patchwork quilts will be durable, touchable and visible from several viewpoints on the main level of the library. The nature theme is timeless and should be enjoyable through the years.



HALL 114 NORTH SCALE: 1" = 1.0'



HALL 114 WEST SCALE: 1" = 1.0'



SAMPLES:

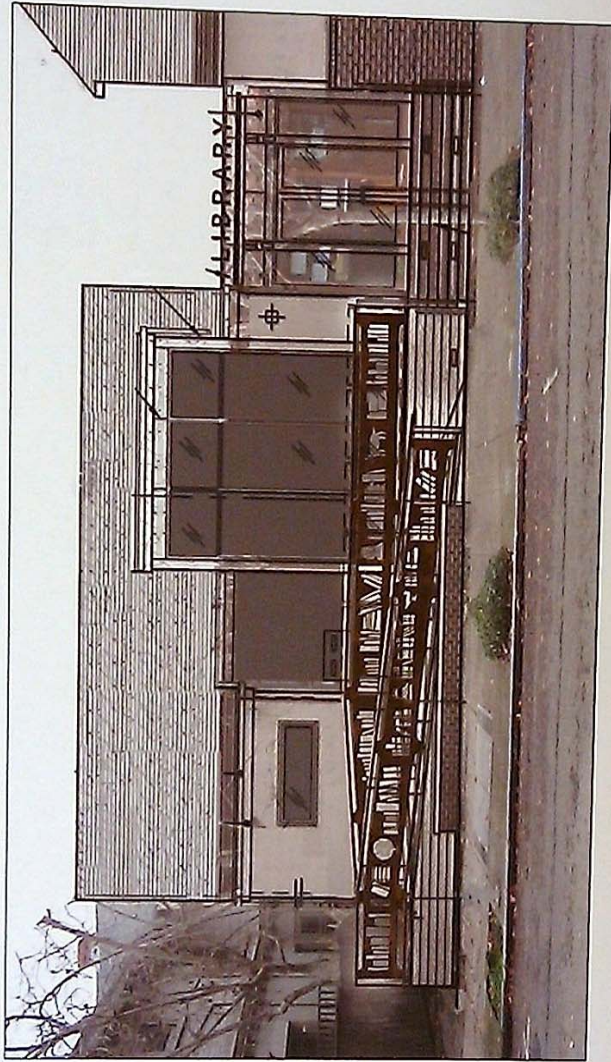
24 OZ. COPPER SHEET
11 GA. 304 STAINLESS STEEL

Bookshelves

An Artistic Railing by Eric Powell, Artist

Claremont Library, Berkeley, CA

December 18, 2010



Bookshelves is an artistic railing specifically designed for the entrance to the (soon to be) newly renovated Claremont Branch Library.

Bookshelves is a rendering of the repository of books that exists in all libraries and in virtually every home and place of work. Bookshelves are where we store and keep always visible the fruits of our book collecting.

Shelves of books are concentrated storehouses of human expression. Even within a small space a bookshelf can contain a vast range of writing that expresses the depth and breadth of human experience.

Bookshelves is a railing that serves the very important purpose of creating a safe passage to visitors to the library. It shows in a clear and graphic way, that the building is a library. Included on the shelves are other objects such as a globe, two busts representing writers (a woman and a man), statues of an animals, etc. These are iconic images that are found traditionally on bookshelves. I am open to other ideas for other objects as well.

Bookshelves serves as a timeless and long lasting artwork for the newly renovated Claremont Library.



Recently completed project for the City of Stockton

