



BERKELEY PUBLIC LIBRARY BOARD OF LIBRARY TRUSTEES

REGULAR Meeting
March 10, 2010

AGENDA
6:30 p.m.

WEST Branch
1125 University Avenue

PLEASE
NOTE
LOCATION

The Board of Library Trustees may act on any item on this agenda.

I. PRELIMINARY MATTERS

- A. Call to Order
- B. Public Comments (6:30 – 7:00 p.m.)
(Proposed 30-minute time limit, with speakers allowed 3 minutes each)
- C. Report from library employees and unions, discussion of staff issues
Comments / responses to reports and issues addressed in packet.
- D. Report from Board of Library Trustees
- E. Approval of Agenda

II. PRESENTATIONS

- A. West Branch Library Conceptual Design Update
 - 1. Update by Harley Ellis Devereaux/GreenWorks Studio on the Conceptual Design Phase; Staff Report; and Discussion of Possible Next Steps.
 - 2. Public Comment (on this item only)
 - 3. Board discussion

III. CONSENT CALENDAR

The Board will consider removal and addition of items to the Consent Calendar prior to voting on the Consent Calendar. All items remaining on the Consent Calendar will be approved in one motion.

- A. **Approve minutes of February 6, 2010 Special Meeting**
Recommendation: Approve the minutes of the February 6, 2010 special meeting of the Board of Library Trustees.
- B. **Approve minutes of February 10, 2010 Regular Meeting**
Recommendation: Approve the minutes of the February 10, 2010 regular meeting of the Board of Library Trustees.

IV. INFORMATION REPORTS

- A. **Update on the Branch Bond Program**
Discussion of staff report on status of implementation of the Measure FF branch improvement program, to include update on Request for Proposals, schedule, and budget.
- B. **February 2010 Monthly Report from Library Director**
 - i. Library Development
 - ii. Professional Activities
 - iii. Programs, Services and Collections
 - iv. Personnel
- C. **Library events**: Calendar of events and press releases for various Library programs are posted at <http://www.berkeleypubliclibrary.org>
- D. **Celebrating National Library Week**

E. Measure FF: Branch Improvement Program Bookmobile Option For Continuity Of Services During Branch Closures

V. AGENDA BUILDING

Next regular meeting will be held at 7:00 p.m. on Wednesday, April 14, 2010 at the **Central Branch Library, 2090 Kittredge Street, Berkeley.**

VI. CLOSED SESSION

A. Public Employee Performance Evaluation

(Pursuant to Government Code Section 54957)

Title of position being evaluated: Director of Library Services. The Board of Library Trustees will recess into closed session to conduct a public employee performance evaluation.

VII. ADJOURNMENT

Please refrain from wearing scented products at public meetings.

Written materials may be viewed in advance of the meeting at the Central Library Reference Desk (2090 Kittredge Street), or any of the branches, during regular library hours.

To request a meeting agenda in large print, Braille, or on cassette, or to request a sign language interpreter, assistive-listening device or other accommodation for the meeting, please call (510) 981-6195 (voice) or (510) 548-1240 (TDD). Providing at least five (5) working days' notice prior to the meeting will help to ensure availability.

I hereby certify that the agenda for this special meeting of the Board of Library Trustees of the City of Berkeley was posted in the display cases located at 2134 Martin Luther King, Jr. Way and in front of the Central Public Library at 2090 Kittredge Street, as well as on the Berkeley Public Library's website on March 4, 2010.



//s//

Donna Corbeil, Director of Library Services
Serving as Secretary to the Board of Library Trustees

For further information, please call (510) 981-6195.

COMMUNICATIONS

Communications to Berkeley boards, commissions or committees are public record and will become part of the City's electronic records, which are accessible through the City's website. **Please note: e-mail addresses, names, addresses, and other contact information are not required, but if included in any communication to a City board, commission or committee, will become part of the public record.** If you do not want your e-mail address or any other contact information to be made public, you may deliver communications via U.S. Postal Service or in person to the secretary of the relevant board, commission or committee. If you do not want your contact information included in the public record, please do not include that information in your communication. Please contact the secretary to the relevant board, commission or committee for further information.

1. Phil Allen
2. Tom Dufour



BERKELEY PUBLIC LIBRARY

| 6

PRESENTATION CALENDAR

March 10, 2010

TO: Board of Library Trustees

FROM: Donna Corbeil, Director of Library Services

SUBJECT: MEASURE FF WEST BRANCH LIBRARY PROJECT UPDATE: DIRECTION ON CONCEPTUAL DESIGN PHASE SCHEME

INTRODUCTION

At the Saturday, February 6, 2010 BOLT Special meeting, design team members Ed Dean and Sylvia Wallis from Harley Ellis Devereaux / GreenWorks Studio made a presentation on three possible conceptual schemes. At the regular BOLT meeting of Wednesday, February 10, 2010 the board took up a discussion of the three schemes, reviewed the discussion held on Saturday and discussed possible next steps.

CURRENT SITUATION

February BOLT Discussion & Action

The West Branch project is in the conceptual design phase.

At the February 10, 2010 meeting, after thoughtful consideration, the board voted unanimously (Trustee Golphin was absent) to pursue an option that would result in an all new building on the site.

Voting on a one-story or two-story design concept was reserved pending additional information. Among the topics raised for follow-up discussion / consideration were:

- Design options ability to meet the project's budget;
- Design's ability to provide a civic presence;
- Incorporates green space, preferably at the front of the building for public access, while allowing for bike racks; and
- Cost of the Photo Voltaic system, preferable that it is included in the base bid estimates rather than as an alternate to ensure a ZNE building.

In these deliberations the board stressed the importance of the selected scheme to meet the program set by the library, while allowing for a level of flexibility to respond to future needs and opportunities and to maximize the capacity of the site without feeling constrained.

Further, the scheme selected for development in the next phase of design will ideally meet these general criteria:



- Reflect the desire of the board and community to position the West Branch Library as the gateway to the community via the major artery of University Avenue;
- That it be designed with materials and finishes of a high caliber for durability and to enhance the aesthetic quality desired by the community and board;
- Create a home for the adult literacy program Berkeley READS, which has been operating in undersized quarters;
- The new library will strive to meet the sustainability requirements of the city, including utilizing day-lighting techniques such as skylights and an alternative energy source;
- Look for opportunities to incorporate features reflective of the historical aspects of the neighborhood / old building and / or references to the library's place in the history in the community; and
- Meet the bond program requirements, to create a modern, accessible and safe library that can deliver 21st century library services.

One – Story New Option: Scheme B

The two major concerns regarding the one-story new scheme have been addressed.

First, in the previously presented Scheme B the building was set back from the rear yard to accommodate two groupings of trees, in the NW and NE corners respectively, as a result creating a tight front entry with minimal space for landscaping. Since the February meetings, the Landscape consultant has further evaluated the landscape, as concerns the Northeast corner of the lot he has stated, "These trees appear generally unhealthy, especially in contrast to the trees on the westerly side. They have been severely and asymmetrically pruned on the easterly face in response to the adjacent hotel construction and are growing in a very confined area inappropriate to either their existing or future size. The upper branches are relatively sparse and appear stressed, likely the result of their root systems being confined by buildings and with 1/3 - 1/2 under impermeable paving on the neighbor's side. These already messy trees will have increased debris fall as the stresses to the trees increase, which will be an ongoing problem for maintenance and danger to the building." Their removal is recommended.

Related to this issue is the degree to which the new building schemes lowered the building and the depth of the excavation and the resulting height of the retaining walls required to protect the rear landscaping. The 2-story scheme employed a ramp to the east of the lot, while the one-story scheme brought the building lower (by deeper excavation) to meet the sidewalk at the center of the lot. The proposed scheme (Attachment A) has been revised to utilize the ramp option in which the building is lowered less than previously proposed. The advantage of this change is that the trees that are healthy in the Northwest corner of the lot will be protected with a retaining wall and less excavation will be required to level the lot. The landscape consultant has concluded that each of the schemes (previously proposed Scheme B and C) will work with the goal of preserving these trees. Both give the trees good breathing room horizontally, though Scheme C, as originally proposed "is significantly less invasive into the tree's root zone". In order to minimize the impacts on the large northwesterly trees the layout, including the entrance sequence is revised in the presented revised Scheme B (one-story option).

The second item was the ability of the program to fit comfortably on the site while providing green space or an entry court and bike rack parking. The opening up of the NE rear corner of the lot would allow the building to reach farther into the rear yard creating the desired green court at the entry. The staff will continue discussions with Planning Department staff regarding any approval that this option may require.



Two – Story New Option: Scheme C

The two-story scheme as presented on 2/10 was over the set project construction budget of \$4.9 million. In order to bring it within the construction budget set for the project the design team developed a list of possible reductions, these included: reduce the overall gross area by 150 SF; reduce the site development budget by approximately 15%; reduce the mechanical and engineering budget by approximately 5%; make the entry canopy an add alternate; reduce the contingency budget and use stucco finish on the North and South elevations in lieu of metal panel /rain screen solution. The photovoltaic system was added into the base project cost. These reductions / additions to the program scope would significantly impede the schemes ability to meet the desired library program and project requirements and is therefore not recommended.

LPC

An informational presentation was made by the design team at the March 4, 2010 Landmarks Preservations Commission meeting to update them on the West branch project.

NEXT STEPS

Following board discussion and consensus on a conceptual scheme preference, the board will need to give direction to staff in order to move the project to the schematic design phase. In the next phase of design staff will schedule a community meeting to continue discussion of drawings and documents illustrating project scale, layout, site issues, massing / elevations and functionality. Staff will bring more developed plans to the board during this phase for additional review and direction.

Following the board meeting staff will seek advice from the Planning Department on the next steps in the approval process.

ATTACHMENTS

A: Design Scheme B (revised); Scheme C; Design Considerations

DESIGN SCHEME

NEW CONSTRUCTION ONE-STORY

THE WEST BRANCH LIBRARY

Existing mature redwood trees preserved and visible from street

Photovoltaics on sawtooth monitors allude to context of Ocenview warehouses/

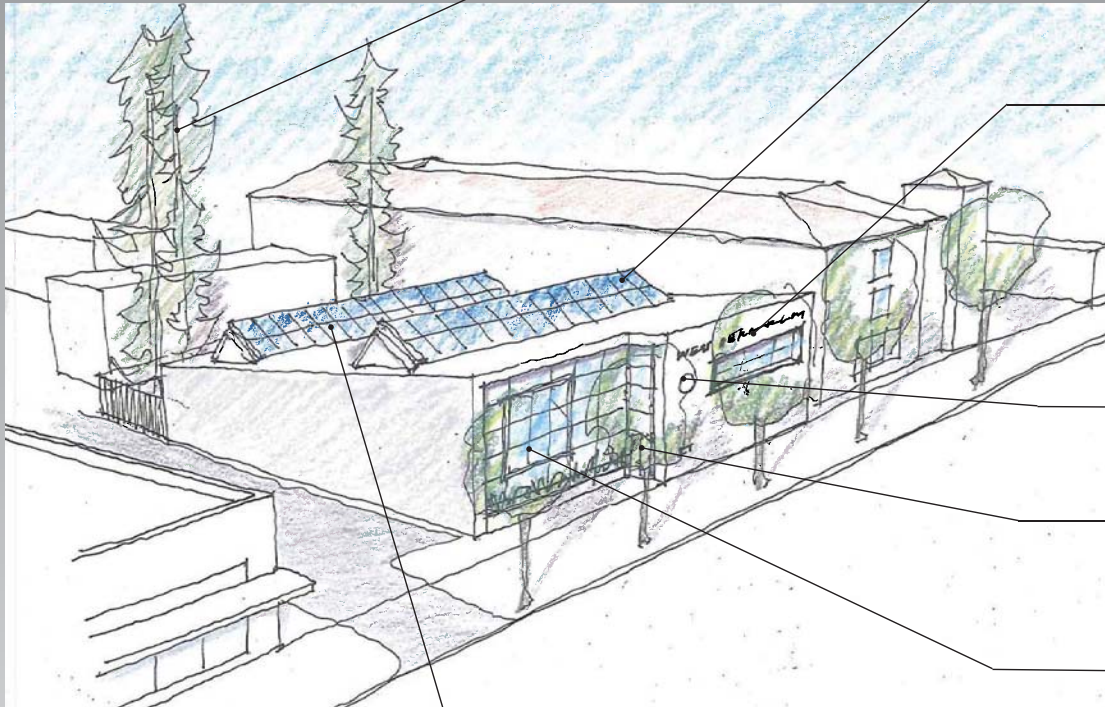
Building signage of incised lettering to match original

Simple and formal architecture with civic presence

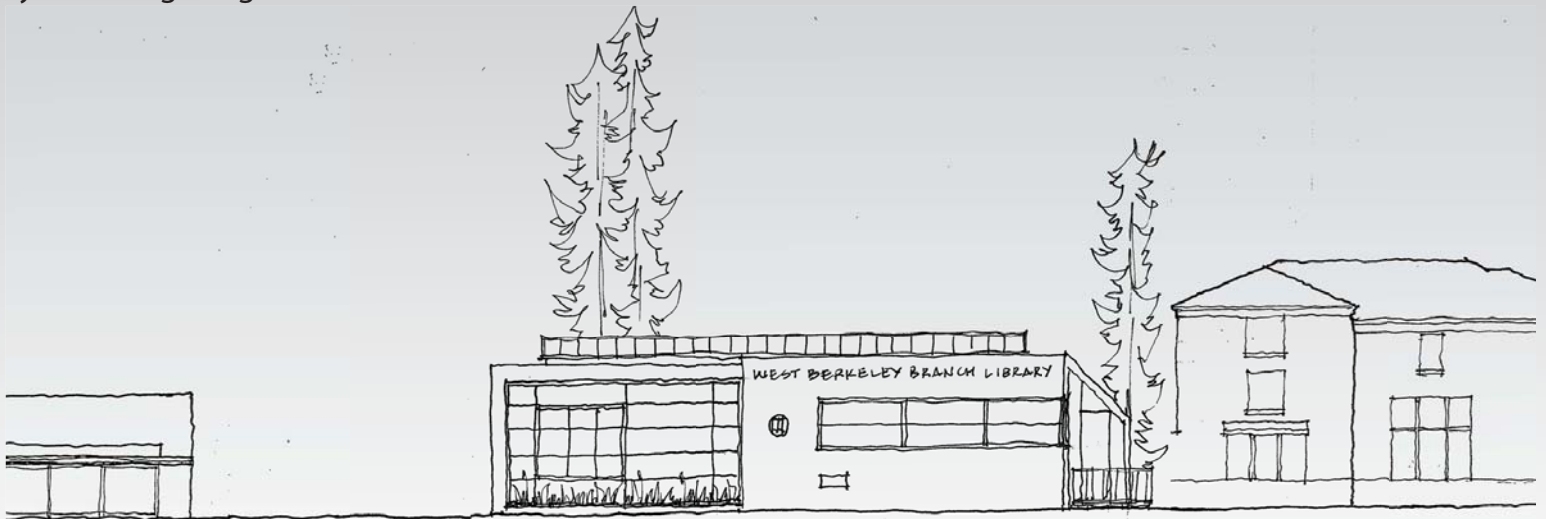
Relocated original medallion

Prominent doorway welcoming patrons

New 9-square window with proportions to match original



Roof monitors bring enhanced natural daylight inside, symbolizing enlightenment



UNIVERSITY AVENUE ELEVATION

DESIGN SCHEME

NEW CONSTRUCTION ONE-STORY

THE WEST BRANCH LIBRARY



BUILDING SECTION



FIRST FLOOR PLAN revised 3-3-2010

Total Area: 8,660 GSF

PROS:

- Civic Presence
- Engagement with Street
- Connection w/ Oceanview Context
- Spacious Atmosphere
- Good Circulation Flow
- Ease of Use of Single-Story
- Efficient Plan w/ Good Adjacencies
- Plentiful Daylight
- View of Redwood Trees
- Adequate Area for Photovoltaics
- Good Natural Ventilation

CONS:

- Removes 1923 Building
- Less Outdoor Space

Updates 3-3-2010:

Scheme B meets budget:

- Includes net zero strategies
- Minimal value engineering required

Northeast trees to be removed in all schemes per recommendation of landscape architect.

HARLEY ELLIS DEVEREAUX

DESIGN SCHEME

NEW CONSTRUCTION TWO-STORY

THE WEST BRANCH LIBRARY

Existing mature redwood trees preserved and visible from street

Photovoltaics on sawtooth supports allude to context of Ocenview warehouses/

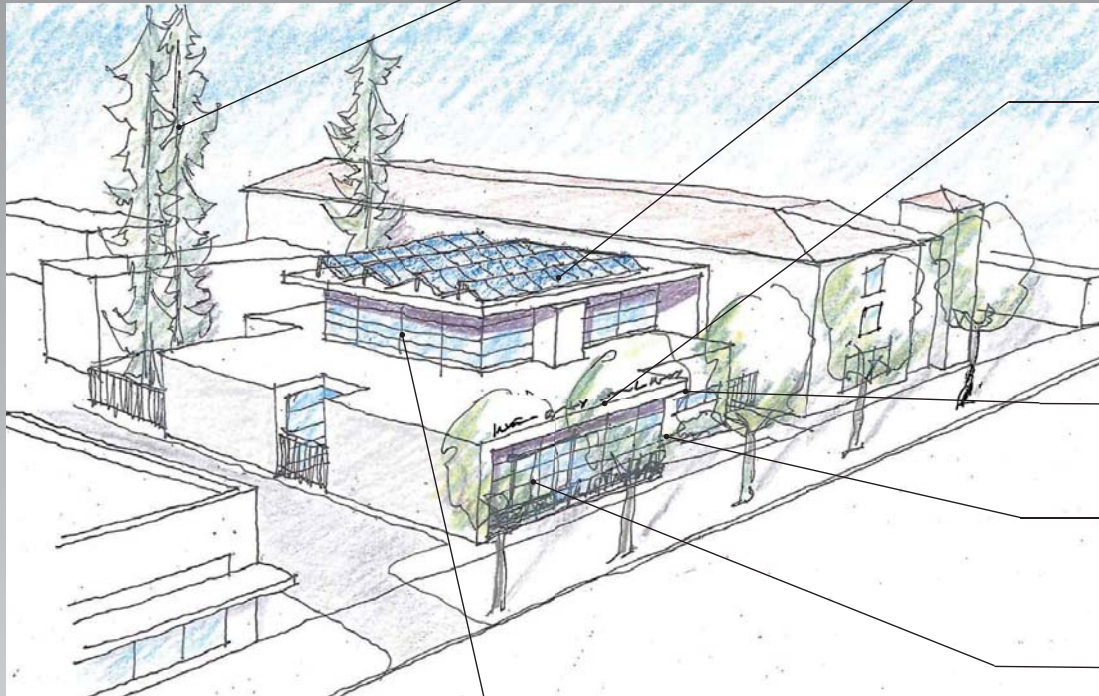
Building signage lettering to match original

Simple and formal architecture with civic presence

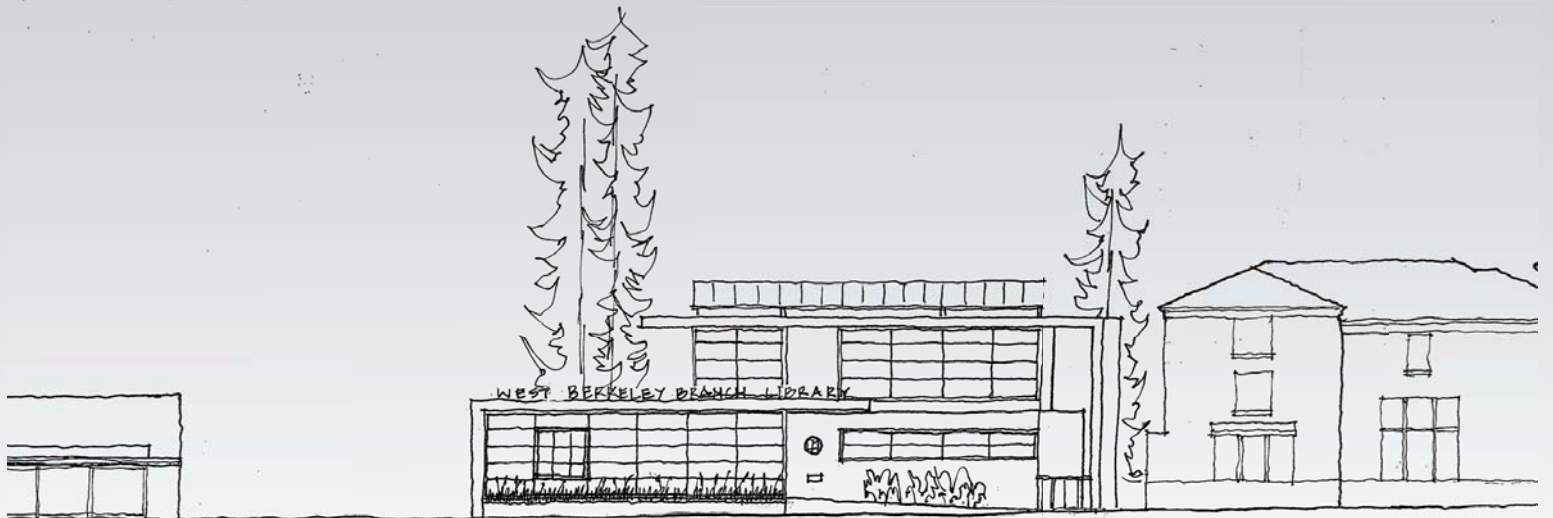
Relocated original medallion

Prominent doorway welcoming patrons

New 9-square window with proportions to match original



Central atrium brings enhanced natural daylight inside, symbolizing enlightenment

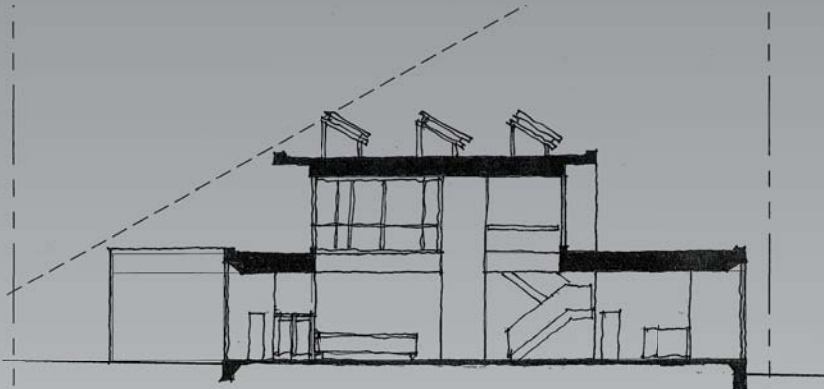


UNIVERSITY AVENUE ELEVATION

DESIGN SCHEME

NEW CONSTRUCTION TWO-STORY

THE WEST BRANCH LIBRARY



BUILDING SECTION

PROS:

- Civic Presence, Engagement with Street
- Connection w/ Oceanview Context
- Spacious Atmosphere, Good Circulation Flow
- View of Redwood Trees
- Adequate Area for Photovoltaics
- Generous Outdoor Spaces

CONS:

- Sightlines & Adjacencies Compromised by Vertical Circulation
- Less Effective Daylighting

Updates 3-3-2010:

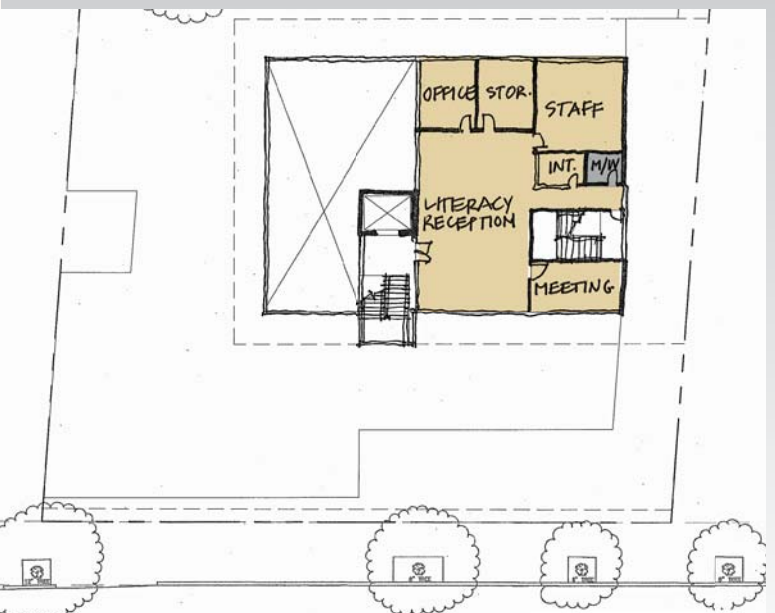
Scheme C meets budget:

- Includes net zero strategies
- Significant value engineering required

Northeast trees to be removed in all schemes per recommendation of landscape architect.



FIRST FLOOR PLAN



SECOND FLOOR PLAN

Total Area: 9,272 GSF

HARLEY ELLIS DEVEREAUX

DESIGN CONSIDERATIONS

THE WEST BRANCH LIBRARY



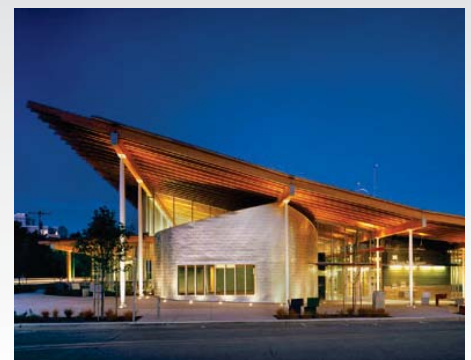
Context



Oceanview Neighborhood



Civic Presence



**Berkeley Public Library
Board of Library Trustees**

**Special Meeting
February 6, 2010**

**MINUTES
12:00 p.m.**

**West Branch
1125 University Avenue**

I. PRELIMINARY MATTERS

A. Call to Order

The special meeting of February 6, 2010 was called to order by Chair Kupfer at 12:08 PM.

Present: Trustees Winston Burton, Abigail Franklin, Carolyn Henry-Golphin and Susan Kupfer.

Absent: Darryl Moore

Also present: Donna Corbeil, Director of Library Services; Suzanne Olawski, Neighborhood Services Manager; Dennis Dang, Library Admin Manager; Alan Bern, Library Special Services Coordinator

Harley Ellis Devereaux/ GreenWorks Studio (HED/GWS) – Sylvia Wallis, RA, Edward Dean, AIA

Steve Dewan, Project Manager, Kitchell CEM

R10-010 Moved by Trustee Henry-Golphin, seconded by Trustee Burton to approve the agenda as presented Motion passed unanimously.

II. WORKSHOP SESSION ON MEASURE FF WEST BRANCH LIBRARY UPDATE
--

A. Presentation by Harley Ellis Devereaux/GreenWorks Studio on the Conceptual Design Phase; and Staff Report on the Process, Community Input and Next Steps.

Edward Dean (HED/GWS) and Sylvia Wallis (HED/GWS) presented conceptual design plans for the West Branch Library

Mr. Dean recapped efforts over last few months, getting familiar with needs of the library as articulated in library building program. Assignment was to develop 3 different approaches to use the site including how to handle the remnants of the 1923 building. Attachment A has the project goals which includes achieve Zero Net Energy (ZNE) performance – West Branch is a good candidate. All three designs can do this. Cost modeling has been done as well comparing the 3 options. Two community meetings were held, at the second one the public comments were mostly around space requirements and more reading areas, no overwhelming response was expressed to save the building. The Existing Conditions board (Attachment B) includes images and issues discussed at the community meeting and / or with the Landmarks Preservation Commission West branch subcommittee. The project is at an important milestone requiring a decision / direction from the library.

Ms. Wallis reviewed three schemes. There are commonalities to all three schemes; they all have the same program or assignable area. Total area may differ. All three schemes get rid of the 1974 addition. All have an autonomous multi-purpose space.

1. Design Scheme A: Rehabilitation Two-Story (with New Addition)

Based on Facilities Master Plan Option A with similar estimated SF total (Attachment C and D); This option was further developed after exploring several others to get to the best alternative represented as scheme A.

2. Features:

- Retain 1923 building and restores / rebuilds, keep 3-sides of building
- Move building 13 feet closer to street and 18” lower, reducing civic presence

- Create side entrance - reduces traffic noise that would flow into the building; works better for after hour community meeting room access. Original door becomes a window, creating quieter reading room, but disturbing can no longer use original entry after remodel (not currently in use as entry).
- Scheme layout meets the building program provided. Shortfalls include: book drop detached from staff work room /return sorting area and could not accommodate automated material handling system in future. Fair job of respecting the building and fair to good job of meeting library needs.
- Would require removal of one redwood tree in the back left where corner of building would go.
- Traffic noise study found original entry would create unacceptable noise levels (70 dbA average) in the library reading space if it were operable, front wall protects the interior reading area now, not accounted for in master plan or earlier study.

Trustee Burton – can the multipurpose room be used after library hours? Yes, all three schemes would allow this.

3. Design Scheme B: New Construction, One Story (Attachment E and F)

Features:

- Float roof up to meet solar access requirements
- Raise building at street to create civic presence and loft like space
- Saw tooth monitors on roof with windows on north side and photovoltaic panels on south side to provide daylight to the interior needed during daytime.
- Conflicting goals of displaying activities inside and distraction of street/traffic activity– large window introduced.
- Flexible spaces with new construction - could change purposes later if library needs to change.
- Maximizes site space, less landscaping.
- Lower at rear due to slope, retaining walls in rear.
- Allows for direct access to the sidewalk level.

4. Design Scheme C: New Construction, Two-Story (Attachments G and H)

Features:

- More exterior space – more generous garden
- Less potential for shading on photovoltaic systems than Scheme B.
- Existing redwood trees maintained and visible from the street.
- Entrance door faces east, slightly above street level, slope up so slightly raised.
- Central atrium brings in light to interior
- Literacy on 2nd floor own space – could add roof terrace,

Ms Wallis summarized:

All three schemes meet library programming needs in a satisfactory manner.

New one-story (Scheme B) is most efficient, all on one floor, don't need elevator or stairs. It fills the site resulting in less outdoor space. Most efficient, least extra gross SF because no need for elevator or stairs and meets the program. No space to expand footprint.

Rehabilitation (Scheme A) will meet the program with addition. This option requires additional square footage for elevator and stairs and to fit program to existing spaces. Rehabilitation of original is not perfect. Original building was set back and up from street level, would be pushed to street without front door operable. Renovation will look much different squeezed into space closer to street and without original entrance. Would cost more than Scheme B as would new 2-story.

Mr. Dean summarized:

The team has met three times with Landmarks Preservation Committee sub-committee for the West Branch. Expressed would like to get their buy-in to whatever scheme we move forward with. Goal was to demonstrate to this group due diligence in options explored, including structural strengthening in a way that wouldn't detract from original building. Found option that would use girders to support old and new building, add ½ " plywood sheathing, rebuild windows and sills to adjust window depth for new sheathing, remove and replace existing interior plaster walls. Much of the original building will need to go away and be rebuilt, will look like old but not be original. Compromises to both historical and library program as result. While the program developed is acceptable there are drawbacks as noted, including additional costs associated with moving the building. Community meeting comments were to increase space, more seating, less distraction from University Avenue, build taller for expansion and not as much on restoration.

B. Public Comments

- 1) Kurt Gray – Attended previous community meeting. Appreciate work being done. Not clear on the financial restraints. He was one of the people in favor of making the library as big as possible including basement. There is a humongous building across the street. This is the direction that buildings are taking on University Avenue. We should be making this building as big as possible. More height in front and lower in back. Use lots of glass. Maximum amount of light. Retain trees. Entrance off university with a courtyard to park bikes. Retain design elements of the original building, there's only a handful left anyway. Don't rebuild the original building.
- 2) Sheila Stern – Has used this branch for 40+ years. Concerned about the library needing space in another 5 years. Which of the plans has most space for actual library needs? Which is most amenable for easily increasing of space. Don't want to build a new building that become obsolete in a few years. Want library functions to improve.
- 3) Celia Jackson – Stressed importance of making internal spaces flexible, able to be rearranged in the future.
- 4) Is the entrance on Scheme A on the parking lot? It's in a courtyard that will be separated from parking lot by landscaping
- 5) Phil Allen – What extent will older part of the library be returned to prominence. Thought it would be shown in all three schemes. How can you move the building? What about future development on property to the west.
- 6) Celia Jackson – Is there enough accommodation for bike and stroller parking?
- 7) Christina Staples – Historic look of neighborhood is important, like idea of including original so not like current addition. We don't want to look back in 20 years and say ugh, we made a mistake.
- 8) Kurt Gray – Reiterated thought building should have as many stories as possible.

Board Discussion

Trustee Kupfer asked for information on cost estimates at this stage:

Director Corbeil reiterated that these are conceptual drawings and there will be changes as we move forward. Mr. Dean reported Scheme B is within budget. Scheme C is over budget, can equate cost with SF. Two story building has cost implications due to stairs and elevator, volume greater to meet program. It's not unusual to have a plan

slightly over budget and then work on ways to reduce costs, would need to reduce costs. Scheme A, is the higher cost option over budgeted amount due to original building moves and reconstruction. Mr. Dean described the steps involved in the renovation scheme: prepare building for initial move by building bracing and support to stabilize structure remaining is self contained, tear down 1970 building, move 1923 building to back of lot, excavate front half of site, build new foundation in location will go, move 1923 building to new location, build missing pieces and then new addition. Moving building twice and rebuilding etc would add to cost \$300K - \$600K. Total cost to completely move and restore original 1923 building would be \$600L to \$800K.

C. Board Discussion

- 1) Trustee Henry-Golphin – Heard that keeping original is important to some in the community. In the next 5 to 6 years what will give us the better option to continue to grow and redesign when community needs and internal needs change? Need to make this a project that lasts longer, see this as priority, what's going to give us the best value long term. Outside is really important to the community but leaning toward what gives us the best value and functionality in the long term.
- 2) Trustee Burton – See historical aspects in A only. Would like more information on LPC's role. The money and machinations involved with moving the building versus the future of having the nicest biggest library that we can. Let's not be constrained by original building if we do not have to be. Functionality is also important factor. Want people to be satisfied in 10 years. Would like to know what LPC is committed to.

Director Corbeil responded that the library and design team have met several times with a subcommittee of the LPC, not the full commission to solicit input.

As a City of Berkeley landmarked building (Structure of Merit), LPC has jurisdiction over the project, so we would go to them based on the recommendation of the Board. As a reminder, voters gave a mandate to improve library services. Board gets to weigh in very heavily on what that means for library services. We are working very closely with the Planning Department whom would advise us on process. Planning would have an EIR conducted in any case. We have asked to make an informational presentation to the full LPC in March 2010. At that point we will tell them which direction the Board is heading.

Sylvia Wallis reported on early meetings with LPC sub-committee even before beginning to develop schemes. Asked LPC sub-committee, if we don't save the whole building is it worth saving a door or a window? Not necessarily, but perhaps there are some other ways to recall the building. One approach HED/GWS took was to recall the neighborhood or history of Ocean View. That led to the loft-like warehouse design with high windows. All schemes have civic presence which was a feature of the original structure on the site. Become an important institution on the street. Small gestures retained, reuse of original medallion, windows in same proportion as original 9 square grid in glazing that would be reminiscent of original windows that no longer exist, and use of incised lettering which are only partially remaining but to make it a positive vs current negative. Tie in to create continuity with past.

- 3) Mr. Dean – LPC subcommittee members expressed not interested in specific pieces being kept and applied in a new structure, this isn't seen as respectful. To them there's the whole issue of a civic presence and way you use an old building. They're still looking for an "AA" scheme. We think scheme A makes the best use of the existing building. LPC subcommittee hasn't said it's okay to use bits and pieces of items identified in the landmark resolution. They identify 6 pieces of the building in the landmark application. There could be some very creative ideas to reuse some of these features in the interior. There are still a lot of ideas to explore.
- 4) Trustee Franklin – All three designs have very attractive features. Typically like historic preservation, but even though Scheme B has the smallest square footage it maximizes what you can do in the space. Maximizing the footprint is a good idea. Love the light that the saw tooth type roof would provide. Like the way that ties into the historic neighborhood. Cost is important, staying within the budget is important. More concerned with functionality of space than the exterior. Asked architects to discuss further how would grade the functionality of each scheme.

Ms Wallis responded that functionality of scheme A is a "B or B+" Functionality of Schemes B and C is an "A." Mr. Dean pointed out that a major drawback of Scheme A is that book returns go into

closet and librarians have to constantly empty it. Schemes B & C the books returns go directly into the workroom which will have automated book handling. Less easy to move things around in Scheme A. MS Wallis pointed out that Scheme A has less flexibility, whereas B has flexibility for moving programs around, although having Literacy on the ground floor may limit the flexibility. Mr. Dean added that Literacy program restricts the moving of spaces in A and B whereas Scheme C puts Literacy upstairs and allows the first floor to be more easily changed.

The programmable space is larger in all 3 schemes, the current building is 6,200 square feet and the building program calls for a total of 8,600 square feet, 7,310 square feet for the library and approximately 1,200 for the Literacy program. Programs get roughly the same additional space in all 3 schemes, scheme A is bit different because we were trying to fit within the historic part of the building. Scheme B is approximately 2600 square feet (40%) larger than existing building. Scheme C, 2-story new building has more space dedicated to stairs, elevators, lobby and additional bathrooms required due to the second floor. Mr. Dean clarified that there is assigned and unassigned spaces.

- 5) Trustee Franklin asked if the staff had a preference or opinion on the functional difference between the options. Director Corbeil said the staff was involved in development of the building program and layouts. Staff will continue to be involved as the layouts are developed.
- 6) Trustee Kupfer asked Steve Dewan (Kitchell) if he wanted to make any comments on the cost estimates. Mr. Dewan responded that it is still very preliminary but that he could talk about rough percentages, as very conceptual and very early on.

Mr. Dean responded that the photo-voltaic (PV) are not included in any of the schemes cost at this stage, these would add approximately \$250K to each schemes costs. Conceptual design phase estimates indicate scheme A would cost \$800,000+ over budget (16%), scheme B is on budget and scheme C would cost \$250,000 (5%) over budget. In an approximately \$5 million budget.

- 7) Trustee Kupfer inquired if other funding sources were available for photovoltaic systems.
The design team is looking into alternate funding sources; one option is to use a third party model to make the purchase. There is a commitment by the architect to make this a sustainable green project. The third party option is not desirable to the library.
- 8) Trustee Kupfer asked for more on the compromised sightlines and adjacencies in scheme C. Sightline from service desk to adult room is minimally compromised by elevator shaft.
- 9) Ms Kupfer asked what the added costs of operation of the 2-story scheme were if any, in particular with the literacy program on a separate floor. Director Corbeil let the board know staffing for the literacy program is separate from branch library staff. Other maintenance costs could be increased, such as elevator maintenance contracts, etc. There are pluses and minuses with having Literacy on a separate floor.
- 10) Ms Kupfer asked the architects to discuss the less effective day lighting in scheme C.

Ms Wallis explained the problem was constraint on sides, code does not allow windows on the lot line due to fire rating restrictions, so very little lighting coming in from the side. Second floor removes possibility for skylights in the area below the second floor (only). Architects believe they can mitigate this for the most part, some zones more challenging than others. Atrium walls will have glazing up high to bring in daylight. Staff workroom would be impacted the most, could use "light tubes" to bring in daylight to this area.

- 11) Ms Kupfer asked if the exterior materials are the same for all schemes.

Ms Wallis acknowledged decisions not made yet. On Scheme A would have cement plaster (stucco) on the historic building. The architects have not pursued materials for the other schemes. Mr. Dean added that he expects the sides will not be as visible to public. (west side visible until development occurs on the property on that side.)so we could use less expensive materials on sides and more expensive materials on street side. It is a budget item only at this point.

- 12) Mr. Burton asked if a roof top terrace could be created outside in Scheme C with tables and chairs and could we plan now for an addition to the second floor later.

Ms Wallis said that it would be possible, not advisable in rear due to neighbors. It is possible to engineer for future expansion but we would want to plan for expansion now as it could affect day lighting inside and PV placement. Full ADA access would be needed.

Mr. Roberts (landscape designer for the project) added that the comment earlier about bicycle access / parking should be addressed early especially on the schemes with constrained sites.

I. AGENDA BUILDING

- A.** The next regular meeting will be held at 6:30 p.m. on Wednesday, February 10, 2010 at the South Branch Library, 1901 Russell Street, Berkeley.

II. ADJOURNMENT

- R10-011 Moved by Trustee Burton, seconded by Trustee Henry-Golphin, to adjourn the special meeting of the board at 1:30 PM. Motion passed unanimously.**

Attachments:

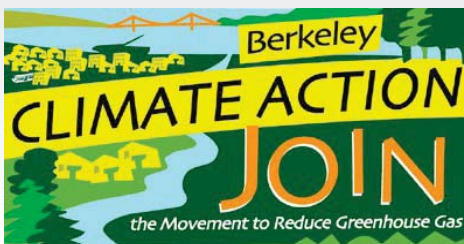
- 1) Harley Ellis Devereaux/GreenWorks Studio Presentation on West Branch

PROJECT GOALS

THE WEST BRANCH LIBRARY



- * Enhance library services with a convenient, welcoming, safe, secure, and accessible facility, with flexibility for the future
- * Provide adequate space to accommodate all library and literacy programs, including a quiet and comfortable oasis for learning and reading
- * Provide a LEED silver facility (minimum) that meets the net zero energy goals of the city
- * Create a civic and engaging presence on the street that responds to the Oceanview context



EXISTING CONDITIONS

Consent III, Item A
Attachment #1

THE WEST BRANCH LIBRARY



One of two original medallions



Head, jamb and sill extensions required; Fungal infection in some areas; Single-glazing



Door is not original design or construction; single-glazed window



Dry-rot and termites in cripple wall; cripple wall not salvageable; exterior walls require seismic strengthening

West portion of text 'WEST BERKEL' has been damaged by construction of addition; East portion of text 'EY BRANCH LIBRARY' in good condition



Remaining Significant Features

Key	
	Good working condition
	Working condition, but should be repaired or replaced
	Need immediate repair or replacement

West Branch Library		Built: 1923
Berkeley Public Library		Addition: 1974
Existing Building Evaluation Summary		Size: 6,230 SF
Structural		<ul style="list-style-type: none"> Provide new concrete footing under walls of original 1923 building. Replace wood framing underneath the building where it is missing or damaged by rot. Replace perimeter cripple walls with new concrete stem walls. Add new plywood shear walls in the crawl space below the building. Install new plywood sheathing on the roof and its diaphragm into the walls.
Mechanical		<ul style="list-style-type: none"> The existing system uses three rooftop units that provide both heating and cooling. The HVAC units were installed in 1994 and are still functional, although nearing the end of their planned useful life; they should be replaced if the scale of work to the rest of the building merits it. Ductwork needs to be reconfigured in problem areas of the building, and to restore the original reading room ceiling.
Electrical		<ul style="list-style-type: none"> Replace all existing plumbing fixtures and water piping. Add overflow drains or receptors to the roof drainage system; replace downspouts. Add a wet pipe fire sprinkler system to the entire building.
Architectural		<ul style="list-style-type: none"> Panels are overloaded and outdated and should be replaced. Panels are surrounded by exposed wiring and crammed behind stiff desks without legally required clearance; the space should be reconfigured to allow construction of a closet. Service to building must be replaced and possibly upgraded.
Roofing		<ul style="list-style-type: none"> Replace existing lighting fixtures with historically appropriate fixtures, augmented to provide adequate lighting for all tasks. Install new emergency lighting and illuminated exit signs, required by code. Telephone and data service is in working order. Replace with state-of-the-art telecom systems and wiring in concealed raceways and proper telecommunications room. Add Cable TV service. The roof itself is in acceptable condition, but the current roof drainage needs to be reworked so that it does not direct water under the building.
Windows & Doors		<ul style="list-style-type: none"> All original wood-framed windows need to be repaired where possible, otherwise replaced in kind, so they are easily operable by the staff. Replace all door hardware for accessibility. Restore original entry door.
Existing Finishes		<ul style="list-style-type: none"> Remove ceiling in reading room and restore original ceiling and trim. Repair and re-paint entire exterior, including repairs to all remaining original wooden trim. Provide new, historically appropriate and accessible circulation deck.
ADA		<ul style="list-style-type: none"> Recent accessibility upgrades have made much of the public areas accessible, with several deficiencies. Bring all public areas into compliance (shelf spacing, etc). Staff areas are much too crowded for legal accessibility; staff restroom is not accessible.
Hazardous Materials		<ul style="list-style-type: none"> There is asbestos in the existing vinyl floor tile, drywall and taping mud, roofing mastic and pipe insulation. Existing exterior paint contains lead, particularly at the trim.
Pest Damage		<ul style="list-style-type: none"> There is termite damage and fungus infection in the wood framing under the original part of the building. There may be fungus infection in some of the original woodwork wall framing. There is fungus damage in the wooden trim at doors and windows.
Historic Character		<ul style="list-style-type: none"> The original building was built in 1923; the additions date from 1974. Very little remains of the original building, and what does remain is invisible from the street and only slightly apparent in the building interior. Restoration of the building's historic character would require removal of the additions and re-creating, from drawings and photographs, the removed windows and other historic features. The reading room could be restored by removing the ceiling and rebuilding the original skylight, copying the original light fixtures, and reinstalling built-in wooden bookcases at the perimeter of the room.
Major Program Needs		<ul style="list-style-type: none"> Adequate space for the adult literacy program allowing for private tutoring sessions, group study, and program expansion. Adequate multi-purpose meeting room space to best meet the programming needs of a diverse multi-cultural community.

DESIGN SCHEME

REHABILITATION TWO-STORY

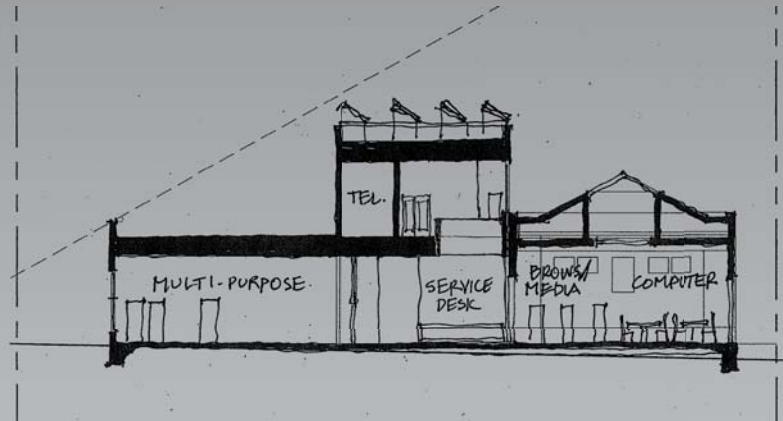
THE WEST BRANCH LIBRARY

PROS:

- Rebuilds 1923 Building
- Large Entry Courtyard

CONS:

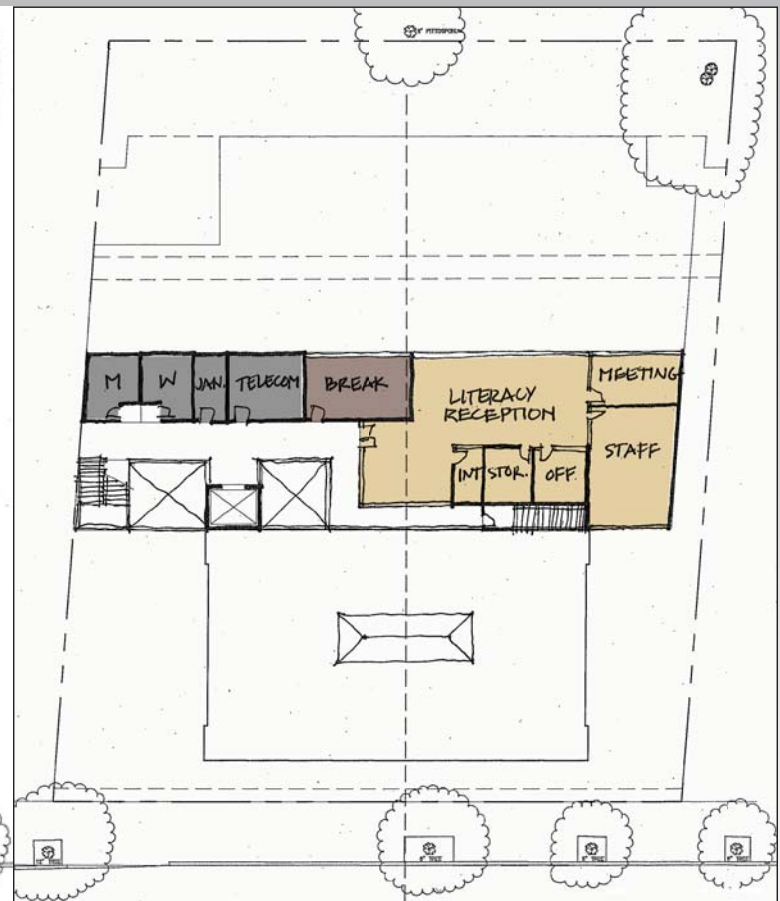
- Relocates and Lowers 1923 Building
- Major Reconstruction Required
- 1923 Main Entry Closed Off
- Inefficient Floor Plan
- Book Drop Detached from Returns
- Less Effective Daylighting
- Less Roof Area for Photovoltaics
- Three Redwood Trees Removed



BUILDING SECTION



FIRST FLOOR PLAN



SECOND FLOOR PLAN

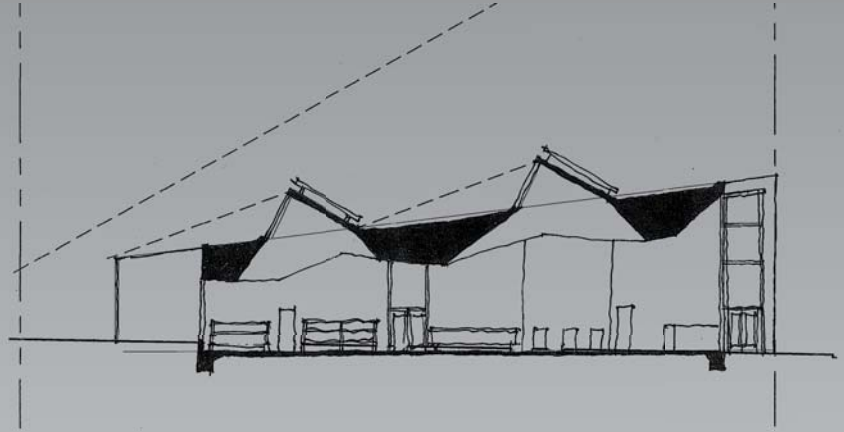
Total Area: 9,869 GSF

HARLEY ELLIS DEVEREAUX

DESIGN SCHEMES

NEW CONSTRUCTION ONE-STORY

THE WEST BRANCH LIBRARY



BUILDING SECTION



FIRST FLOOR PLAN

Total Area: 8,660 GSF

PROS:

- Civic Presence
- Engagement with Street
- Connection w/ Oceanview Context
- Spacious Atmosphere
- Good Circulation Flow
- Ease of Use of Single-Story
- Efficient Plan w/ Good Adjacencies
- Plentiful Daylight
- View of Redwood Trees
- Adequate Area for Photovoltaics
- Good Natural Ventilation

CONS:

- Removes 1923 Building
- Minimal Outdoor Space

DESIGN SCHEME

NEW CONSTRUCTION TWO-STORY

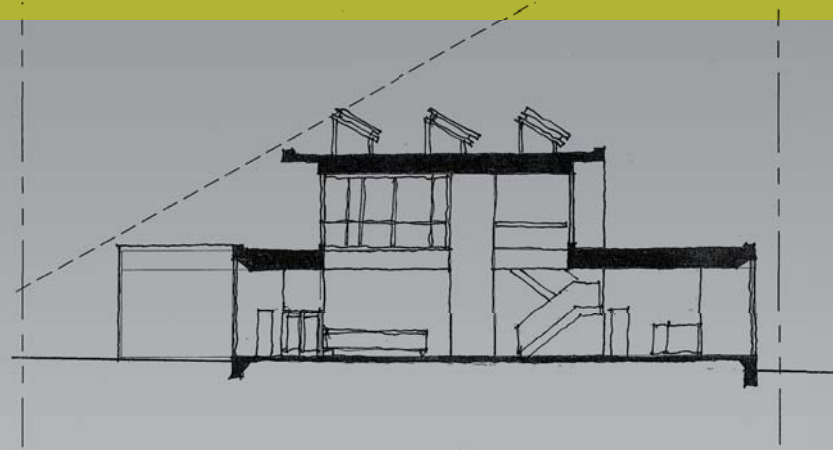
THE WEST BRANCH LIBRARY

PROS:

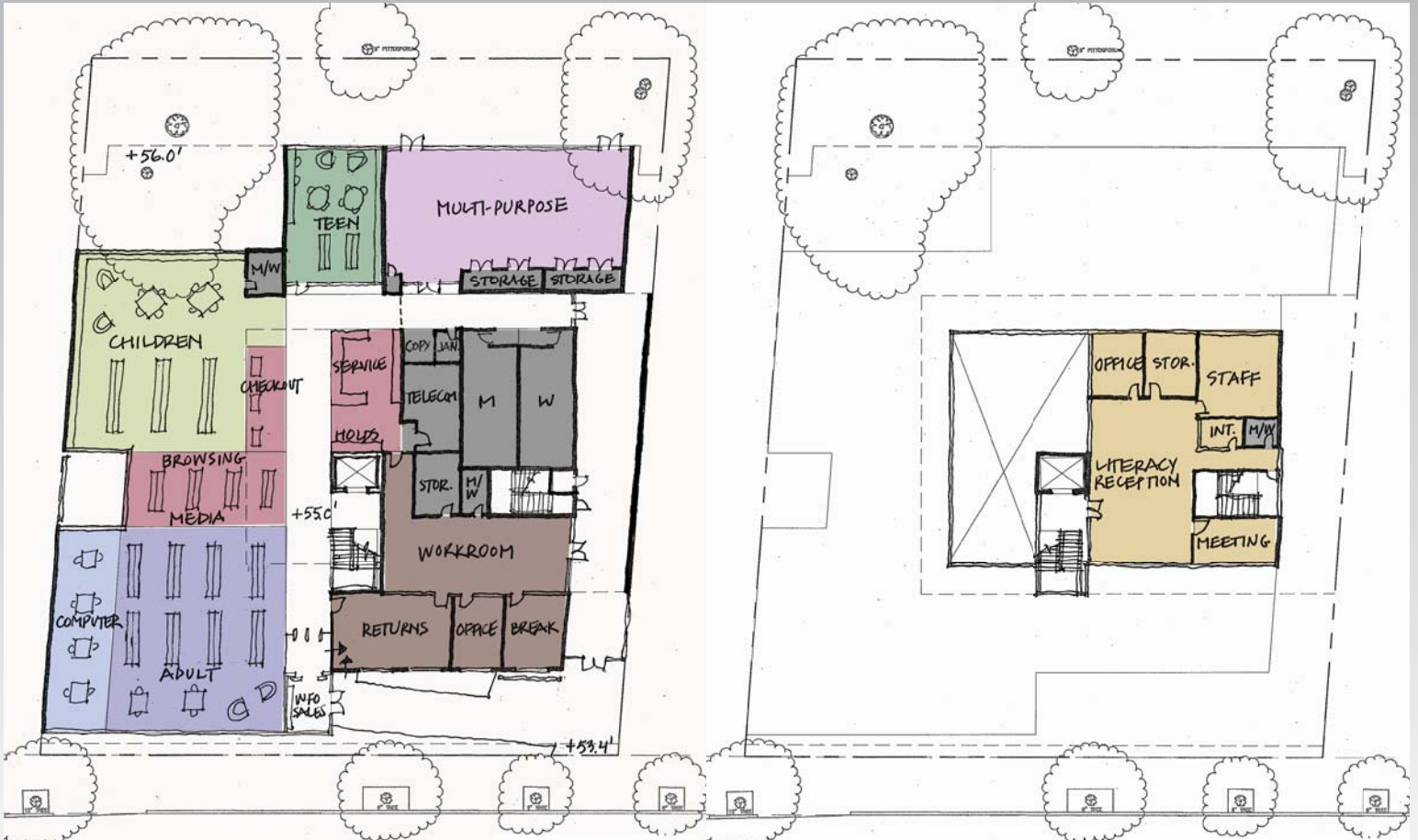
- Civic Presence, Engagement with Street
- Connection w/ Oceanview Context
- Spacious Atmosphere, Good Circulation Flow
- View of Redwood Trees
- Adequate Area for Photovoltaics
- Generous Outdoor Spaces

CONS:

- Sightlines & Adjacencies Comprised by Vertical Circulation
- Less Effective Daylighting



BUILDING SECTION



FIRST FLOOR PLAN

SECOND FLOOR PLAN

Total Area: 9,272 GSF

HARLEY ELLIS DEVEREAUX

**Berkeley Public Library
Board of Library Trustees**

**Regular Meeting
February 10, 2010**

**MINUTES
6:30 p.m.**

**South Branch *
1901 Russell Street**

I. PRELIMINARY MATTERS

A. Call to Order

The regular meeting of February 10, 2010 was called to order by Chair Kupfer at 7:08 PM.

Present: Trustees Winston Burton, Abigail Franklin, Susan Kupfer and Darryl Moore.

Absent: Carolyn Henry-Golphin.

Also present: Donna Corbeil, Director of Library Services; Doug Smith, Deputy Director; Suzanne Olawski, Neighborhood Services Manager; Dennis Dang, Library Admin Manager; Alan Bern, Library Special Services Coordinator;

Field Paoli – Avery Moore, AIA; Mark Schatz, AIA

Gould Evans Baum Thornley – Douglas Thornley, AIA

Harley Ellis Deveraux / Greenworks Studio – Edward Dean, AIA

Rene Cardinaux, Consultant; Steve Dewan, Project Manager, Kitchell CEM

B. Public Comments –

1. Reed Schmidt, Berkeley Public Library Foundation – Thanked the Trustees and City of Berkeley for allowing use of the library for the Eighth Annual Author's Dinner. Several Board Members have left, have selected some new ones and they are recruiting additional Board Members. Will have a session on fund raising.
2. Jerry Long – Berkeley Public Library Foundation – Article and photos from the Author's Dinner can be found at www.SFgate.com under Ms. Bigelow's Social City Column.
3. Trustee Burton - 4x2 committee - Who will attend for the Foundation? To be decided at next Foundation Board meeting.
4. Trustee Burton asked for clarification that the Foundation would recruit a BOLT member for each Branch fundraising committee.
5. Trustee Moore – Author's Dinner was great, food was excellent and authors were wonderful. Thanked Foundation for all the work to make it happen.

C. Report from library employees and unions, discussion of staff issues – none.

D. Report from Board of Library Trustees – none.

E. Approval of Agenda

R10-012 Moved by Trustee Moore, seconded by Trustee Burton to approve the agenda as presented
Motion passed unanimously.

II. WORKSHOP SESSION ON MEASURE FF BRANCH LIBRARY UPDATE

A. Presentation by Field Paoli Architects on the Schematic Design Phase; and Staff Report on the Process, Community Input and Next Steps.

Ms. Moore reviewed Primary Facility Improvement Goals-Bond Funding, What We've Heard So Far & New Design Highlights (Attachment #A.)

Facility improvement goals. New or expanded library at the existing site. Meet all current code. Consolidated, enclosed Tool Lending Library (TLL) with workspace for staff. Full accessibility. Improved lighting, ventilation, thermal comfort. Reduced energy and water consumption. A warm and welcoming design. Build green, LEED silver or better.

Process to date: Programming needs addressed by staff and library consultant Kathy Page. Concept design phase looked at options to renovate all or part of the existing building and to replace it with new. Two community meetings held with lots of great feedback that was incorporated into the project. Meetings with LPC sub-committee to discuss the options. BOLT meeting with public comments where the trustees directed the architects to focus on an all-new building. Schematic phase included an additional community meeting that was well attended and great comments that have been taken into consideration. Meetings with staff and full LPC.

New design highlights which address community comments. Importance of creating a civic presence to make the library a beacon for the neighborhood. Provide more seating. Provide more computers. Designated Teen space. Better organized an enlarged Tool Lending Library. Retain landscaped areas around building and preserve tree on Russell Street.

Proposed Site Floor Plan – Mr. Schatz presented the proposed Site/Floor Plan (Attachment #B). The proposed building will have a strong presence on the site with an entry at the corner of Russell Street and Martin Luther King Jr. Way. There will be views into the multi-purpose room and children's room from the street. A curved wall at the corner of Russell Street and Martin Luther King Jr. Way will provide a dramatic welcoming to the site. One main block will house library functions (adult, teens, children's, tool lending library and staff work area); a second block will house the multi-purpose room, storage and restrooms. The two blocks are separated by an lobby and entry zone and topped by a high roof with glass on all four sides to bring light into the inside of the building. Tall day lit central area will house the browsing collection, staff desks and self checks, popular materials and laptop computer bar

Mr. Schatz reviewed the Program Summary Chart (Attachment #C) More seating (at tables, soft lounge chairs throughout, stools in kids room, study carrels in adults, tables and chairs in the multi-purpose room and small group study room.) More public computers including laptops to be checked out. More variety of shelving.

Tool Lending Library (TLL) Will be a much larger, single enclosed space. The front area will house large tools, smaller tools will be located behind the service counter. The work room will include a large work bench for repairs, a machine room for the air pump, staff desk and storage units. A separate storage unit off the driveway will store ladders. Architects have worked with staff and Rene Cardinaux to document what is in the TLL and decide how to house all of it.

Small Group Study Room - A small group study room will be located off the teen room.

Primary Elevations – Ms. Moore reviewed primary elevations (Attachment #D.) Along Russell Street there will be a large window along children's room, smaller windows in the corner and staff areas, a wide entry way (10-12 feet wide) with an eyebrow canopy above. There will be large sized window in the Adult reading area directly across from the one in the children's area.) Along Martin Luther King there will be windows into multi-purpose room, driveway and parking spaces in front of TLL.

Exterior Material – Ms Moore reviewed Exterior Material Studies (Attachment #E.) Material to be used is predominantly wood. High roof area glazing will be clear on north side, possibly screened on south side. Other options include different species of wood and stone. Still looking at options but aiming for warmth, solidity and durability with a natural feel. There will be a great amount of daylight in the central area and a possibility for using stained glass on the high roof window that faces the Thai Temple.

Mr. Schatz reviewed computer simulations (Attachment #F) of the exterior and reported that they have started to work on interior simulations as well. He also provided examples of Inspirations (Attachment #G) showing examples of other projects that use similar design elements.

Landscaping – Chuck McCullough reviewed the Landscape Concept Plan (Attachment #H) includes low planting near entry area to allow for easy to maintain views into the building. Accent tree at other end of entrance access near TLL. Zen Garden outside of computer bar area. Secured Patio in Northeast corner off the adult area. Minimal space for plantings along MLK. 2 trees will stay on MLK. One tree on Russell Street stays. The oak tree on temple property will need to be evaluated. Eucalyptus trees to be removed.

Mr. Schatz provided some samples of wood siding, stone.

Schematic cost estimate of \$4.2 million is within the budget but does not include rooftop solar panels. Estimate \$220,000 for solar panels. Looking for ways to reduce costs. Also looking for funding options.

Multi-purpose room could be accessible after hours. Will place some sort of door to close off the multi-purpose room and restroom block from the library block.

Public Comment:

Bob Patterson – Requested access to electrical outlets for laptop computers. *Wireless data access. Electrical outlets throughout the library. Will also have loaner laptops available.*

Chia Hamilton – Will the driveway or walkways be permeable? *Driveway will be permeable if the ground underneath is not too compacted. Walkways probably will drain into the planters on either side.*

Alan Tong – Are there enough windows in the Adult Reading Room to let in daylight. *Since the wall is so close to the property line, there is a limit to the number of windows per fire code. Plan to use as many as will be allowed.*

Hale Zukas – What is life cycle of wood siding? *Haven't explored it yet. There are many examples of stained wood exteriors in Berkeley. Will need to consider maintenance costs for re-staining.*

Alejandra Nunez – Will seating area close to windows in children's area have little nooks for kids to sit in and read. *The intention is to have big comfy chairs where kids can sit in parent's laps. Stools for small kids near smaller windows, easy for kids to pick up and move around.*

Charles Austin – Appreciates the exhaustive process that has occurred. Encourage trustees to approve and get on with building it. *Wish we could start construction immediately but there is a process to go through first. EIR process will likely take 6 months to a year.*

Chia Hamilton – What is the plan for the facility while it is closed for construction? *Staff is considering options. There will probably be two branches closed at a time. There is a cost issue, as Bond funds can not be used for temporary space. Library is hoping most patrons will be willing to use other branches while their branch is closed.*

Board discussion:

Trustee Franklin – Any safety concerns about the big window in the children's area? *Architects believe the more visible the space is the safer it will be. Staff was more concerned about hidden spaces.*

Trustee Burton – The plan is very thoughtful, inclusive of people's concerns. Community has been great about providing thoughtful input.

Trustee Moore – It's been a great process. Like what I see. It will be a great asset to South Berkeley neighborhood.

Chair Kupfer – We have an enormous opportunity to give the community a great building.

B. Presentation by Gould Evans Baum Thornley Architects on the Schematic Design Phase; and Staff Report on the Process, Community Input and Next Steps.

Director Corbeil provided copies of Meeting Notes (Attachment #I), Audience Comments and Survey Responses (Attachment #J) from the February 3, 2010 Community Meeting.

Doug Thornley introduced team members: Gould Evans Baum Thornley: Lauren MacColl Maass, AIA, Project Manager; Bob Gould, FAIA; Karen Gould, Interior Designer. Gates & Associates: Samantha Haimovitch, Landscape Architect.

Presentation Boards attached (Attachment #K)

Conceptual design scheme 3. Dedicated teen space, separate.

New handicap ramp to meet code.

New entry/lobby area with one-point service desk moved farther back from entry to reduce crowding. Children's space and staff work space in 1970's wing. No dedicated multi-purpose room. Flexible space in children's wing can be used for a variety of programs.

1924 Wing - Treating 1924 wing as if it is a landmarked structure. Old wing will have public computer space and soft seating lounge area in one of the fireplace alcoves. Current staff office to be replaced with a dedicated teen space with lots of glass so it's visually connected but contains noise. Adult Reading Room in the other fireplace alcove. The original plans showed sliding panel doors. Proposing to add glass sliding doors to provide a quiet reading space or a small meeting space (12-16 people.)

Samantha Haimovitch reviewed the landscape plans. Brick from old handicapped access ramp will be reused to create a seating wall. Sycamore trees at street edge to be retained while the inner sycamore trees will be replaced with smaller stature trees. Concrete paving at entrance to be replaced with special pavers. More seating nooks and information kiosk along Benvenue. Brick planter at original entrance. New signage on Ashby Avenue side. Native planting to enhance and reveal architectural features. Need to determine the health of the existing redwood trees on back side. Aggregate concrete to be replaced with permeable pavers to allow storm water to remain on site.

Mr. Thornley reported meetings with Landmark Preservation Committee (LPC) sub-committee. An informational meeting with the full LPC will be held on March 4, 2010. Three community meetings have been held. Community supportive of design and provided valuable feedback on landscaping. Will also be meeting with the immediate neighbors.

LEED Silver Goals - LEED Charette to be held later this month. LEED Silver is going to be a challenge for this building. LPC made it little more challenging as they would like to keep original single-pane windows in the 1924 wing. Architects are trying to model this in the energy model to see if is possible.

Budget – Cost estimating is underway. There are some elements that weren't part of the original Bond measure directions. Some of these elements might become optional as we move forward. Goal is to satisfy Bond measure requirements. Hoping to have funding to do minor interventions to enhance the entry experience. Architects are working on refining the estimates. Budget is 2.9 million.

Trustee Burton – Solar Panels? Will need to generate power to get LEED points. Will look at including solar panels in the project. It's not currently part of the energy model.

Trustee Moore – What are the plans for the fireplaces? No finalized plans yet? Possibility to include some flame or light feature.

Public Comment: Director Corbeil reported a community meeting had been held recently and many comments were received.

Board discussion:

Trustee Moore – What was the public reaction to the outside seating? *People spoke to the landscape architect after Saturday community meeting and were excited about seat walls and the recycling of existing materials.*

Trustee Burton – Is the lounge area for staff or public? *It's a public reading area.*

Trustee Franklin – What is the difference in function for lounge area and adult reading room. *They are similar in function. Lounge area will be available to all patrons. Adult reading room will be dedicated to adults.*

Trustee Franklin – Heavy user of Claremont branch. Excited to hear about plans to open up entry area and possible addition of the children's reading nook.

Chair Kupfer – Shelving reduction, what are options on future expansion of shelving?

Mr. Thornley – It's been a very ambitious program to meet. Would need to revisit the program needs and choices. A lot of the adult books aren't being used. When the branch is closed for renovation, staff will go through and pull books that don't get used. Children's collection fits in the new area.

Director Corbeil reported that when library did community surveys people asked for more seating. It's a very busy library and people are frequently looking for a place to sit. Staff is committed to making space work really well. New book displays will make collections more visible.

Hale Zukas- Dormer/Butterfly roof has very little benefit and is not worth the cost.

Mr. Thornley – We believe it will make the area more inviting and bring in more natural light.

Trustee Franklin – Likes the reading nook off the children's space. This branch is a different scenario than the other branches. It looks great. Landscaping looks terrific.

Seismic upgrade - Will be doing a full seismic upgrade. Currently exploring options of removing interior walls to add sheathing.

Time line - Mr. Dewan reported we expect to go to bid end of 2010 or first of 2011. Why so far in future? *Still have to go through Zoning Adjustments Board (ZAB) for Use Permit and variance for additional space.*

Next steps - Director Corbeil recommending further work on cost issues. What can we realistically accomplish within budget prior to completing design development phase.

C. Review presentation made by Harley Ellis Devereaux/GreenWorks Studio on the Conceptual Design Phase; and Staff Report on the Process, Community Input and Next Steps at February 6, 2010 Special BOLT meeting.

Draft meeting minutes and community responses from the February 6, 2010 Special Bolt Meeting on the West Branch were provided.

Chair Kupfer summarized the three schemes that were presented. Scheme A retained remnants of the original building and added new structure around it. Estimated costs are \$800,000 over budget. Schemes B & C are all new construction. Scheme B is single story and fills almost all of the site. It fits program needs and budget. Scheme C has 2 stories. Literacy program would be located on second floor away from rest of library programs. Estimated costs are \$200,000 over budget.

Public Comment: none.

Board discussion:

General Discussion of Current Building:

Chair Kupfer - It's important to note that there is very little of the original building that remains. This should not be construed as a situation where we are abandoning a well-loved, ancient but gorgeous building. It has been so touched upon, destroyed and renovated that there is very little left.

The Board would like to hear more about possible re-use of historic features or a reflection of them in new design (i.e. medallion)

Discussion Regarding the West Branch as a "Gateway to the City" – University Avenue is a major thoroughfare. Board members support a new library of stature/grandeur/significance in this location. It makes sense to have a new facility that's sustainable and meets Berkeley's goals (Net Zero Energy as an option.) Important that the Library is not dwarfed by buildings around it – can stand out in a block with a lot of tall buildings.

Budget Concerns – Board members expressed concerns about not exceeding the budget. Trustees wish to replace current building with an all new building and give the architects time to come up with a new design that fits within our budget. Trustees want to see a building that is within the budget and answers program needs.

Director Corbeil reported we have asked to make an informational presentation to the full LPC on March 4. This will be an opportunity for library and architects to talk to them about the process so far, what direction the Board is heading and possible design schemes.

R10-012 Moved by Trustee Moore, seconded by Trustee Franklin to build an all-new building at the West Branch Library site. Motion passed unanimously. Trustee Henry-Golphin absent.

Discussion on remaining two schemes.

Mr. Dean reported it's very typical at this point to do valued engineering exercises and identify the areas that are causing it to be over budget. It's not unusual to have 5% overage when you do your first cost estimates. We can identify where we should look for cost savings.

General Overview of Each Scheme

Entry Area - Scheme B has very little room at entry. Scheme C has more. Trustee expressed strong desire to make entry more inviting with adequate space for bike parking, strollers, etc.

Would a hybrid of schemes B and C with a saw tooth roof and mezzanine fit within the budget? Desire to bring light into the building (liked saw tooth roof for this reason.) Valued engineering would help us identify if the saw tooth roof would be less expensive than the glass second story.

Trustee Franklin – Initially liked Scheme B but after some thought likes a B-C hybrid. Scheme B is too tight, especially at the entrance area. A hybrid would be a grander presence on University Avenue. Really liked the sawtooth roof, it allows for good light. Placing the Literacy Program on a mezzanine level could make it more visually connected to the library.

Chair Kupfer – Also likes Scheme C. We need to have flexibility to have a second level. However, we don't want to start down a road where we are already over budget at the start. Would like to go with a 2 story scheme, if within the budget. We want civic presence, outdoor space, flexibility.

Solar Photovoltaic System - Zero Net Energy may actually present cost savings, but the photovoltaic system cost are not currently included in the budget. Photovoltaic system could be purchased by bond funds but likely will not fit in the budget. Estimated cost is \$140,000.00. Mr. Dean provided information for Funding Solar Photovoltaic System for the West Branch Library Project (Attachment L).

- Savings by Design could provide \$10-15K, but no guarantee.
- California Solar Initiatives could provide \$22K, but no guarantee.
- Demand- Response Incentive – amount unknown but not expected to be very large if at all.
- Third-Party Provider agreements (PPA) – City would lease the system and pay the PPA instead of PG&E – would use operating budget.

Director Corbeil expressed concerns about photovoltaic leasing. We have an unknown of long term energy cost concerns. We were hopeful that one or two of the projects would have included PV costs. Library staff would be responsible for applying for any grants or programs.

III. CONSENT CALENDAR

R10-014 Moved by Trustee Moore, seconded by Franklin, to approve the consent calendar as presented. Motion passed unanimously. Trustee Henry-Golphin absent.

A. Approve minutes of January 13, 2010 Regular Meeting

R10-015 Moved by Trustee Moore, seconded by Franklin, to approve the minutes of the January 13, 2010 regular meeting of the Board of Library Trustees as presented. Motion passed unanimously. Trustee Henry-Golphin absent.

IV. INFORMATION REPORTS

A. Library Budget Update No discussion.

- B. Update on the Branch Bond Program No discussion.
- C. February 2010 Monthly Report from Library Director Donna Corbeil No discussion.
- D. Library events: No discussion.

I. AGENDA BUILDING

- A. The next special meeting will be held at 6:30 p.m. on Tuesday, March 16, 2010 at the South Branch Library, 1901 Russell Street, Berkeley.
 - Library Budget (April)
 - Library Director review (March)

II. ADJOURNMENT

- R10-016** Moved by Trustee Moore, seconded by Franklin, to adjourn the regular meeting of the board at **9:00 PM**. Motion passed unanimously.

Attachments:

- A-H Field Paoli Presentation on South Branch
- I-K Gould Evans Baum Thornley Presentation on Claremont Branch
- L Harley Ellis Devereaux/Greenworks Studio Memorandum on Funding Solar Photovoltaic System for the West Branch Library Project.

PRIMARY FACILITY IMPROVEMENT GOALS - BOND FUNDING

- New larger library that compiles with current codes
- Larger enclosed Tools Lending Library
- Fully Accessible Facility
- Improved lighting, ventilation and thermal comfort
- Reduced energy and water consumption
- Warm welcoming library design
- Sustainable design to attain LEED silver certification or better

WHAT WE'VE HEARD SO FAR

- Civic Presence on Street Neighborhood Beacon
- Better Access to all space
- All required code upgrades
- More seating
- Increased Technology / Computers
- Teen Space
- Increased and Improved Lending Library
- Better organized Tool Lending Library
- Landscape around Building / Preserve Maple Tree on Russel Street

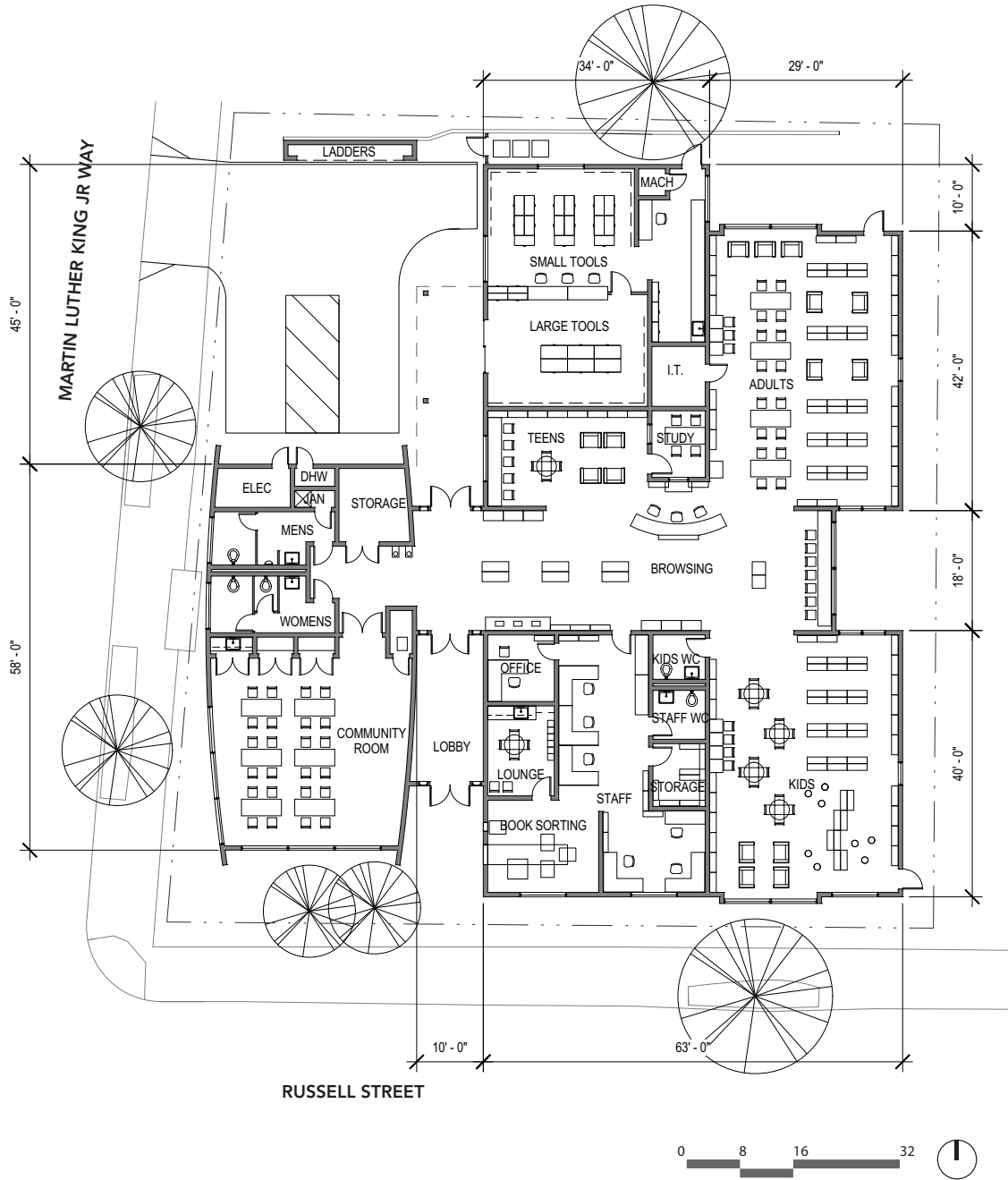
NEW DESIGN HIGHLIGHTS

- New corner entry with multipurpose room visible from street
- More spacious, organized layout
New central browsing / self checkout
- New energy efficient building systems
- More lounge chairs, tables and carrels
Separate noisy and quiet areas
- Wireless access and more computers
- Distinct zone for adults, teens and children
- More work space
- Larger enclosed Tool Lending Library
- Building perimeter is landscaped /
Tree preserved

BERKELEY SOUTH BRANCH LIBRARY

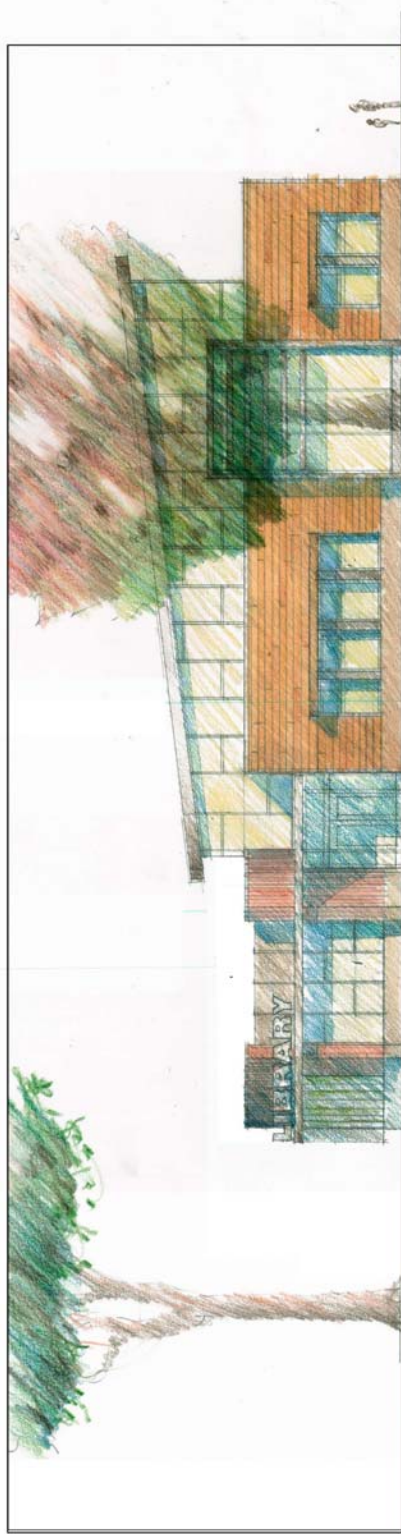
FIELD
PAOLI

SITE/FLOOR PLAN

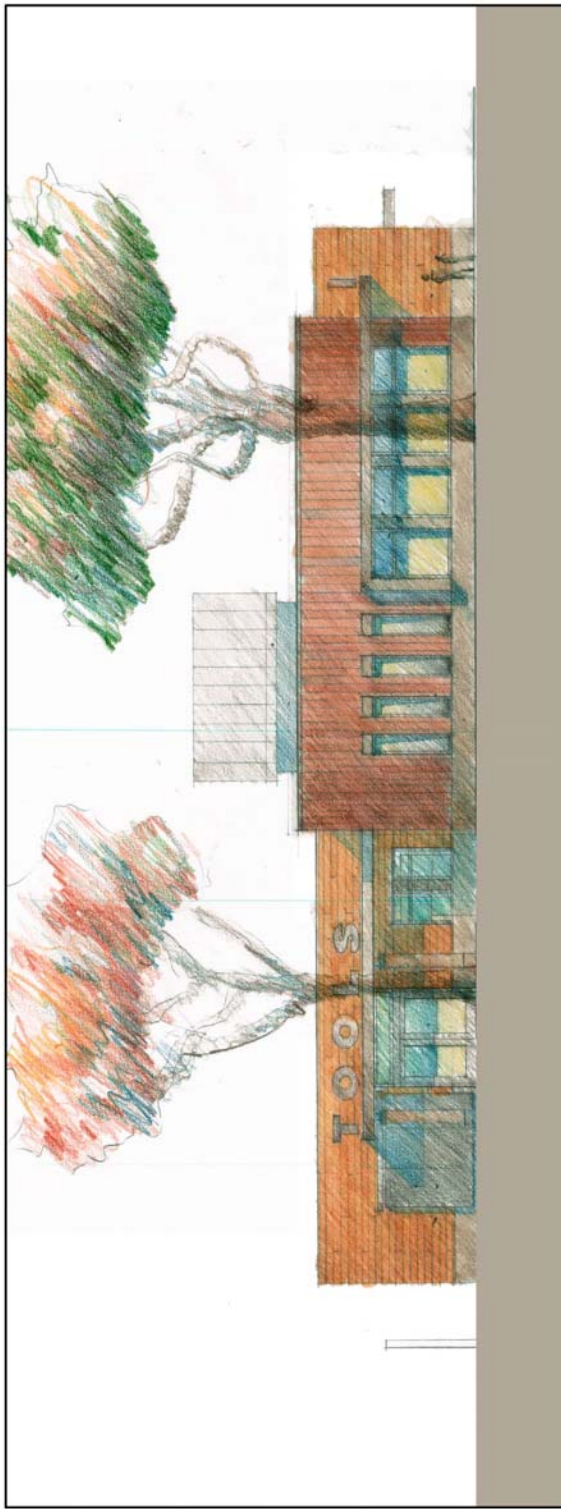


PROGRAM SUMMARY

	Existing	New	Change	Comment
Seating	21	57	+36	+ stools in kids
Computers	9	14	+5	+12 on laptop cart
Shelving (lf)	1,907	2,064	+157	
Library Area	5,400	7,000	+1,600	
TLL Area	~850	1,200	+350	



RUSSELL STREET ELEVATION



MARTIN LUTHER KING ELEVATION

FIELD
PAOLI

BERKELEY SOUTH BRANCH LIBRARY



EXTERIOR MATERIAL STUDIES



INSPIRATIONS



WOOD & GLASS / SHADING



DAYLIT CENTRAL SPACE



CURVED WOOD WALL



VIEWS INTO AN ACTIVE LIBRARY



WOOD SIDING

INSPIRATIONS



SUN SHADING



ANGLED ROOF FORMS



WARM WELCOMING
MATERIALS



LARGE TURNED DOWN WINDOWS

LANDSCAPE CONCEPT PLAN



-  WATER INFILTRATION BASINS & FLOW-THROUGH PLANTERS
-  PLANTING AREAS
-  ACCENT TREES

BERKELEY PUBLIC LIBRARY SOUTH BRANCH

Charles M. McCulloch ASLA
Landscape Architect
PH. 510.548.3888
FAX 510.548.0265

FIELD
PAOLI

2927 Newbury Street
Berkeley, CA 94703
CALIF LIC. # 1307

02.09.2010

Attendance: 19 non-library audience members
Board members: Abigail Franklin
Presenting design team members: Douglas Thornley, AIA and Lauren Maass, AIA, - Gould Evans
Baum Thornley
Samantha Haimovitch - Gates & Associates (Landscape)
Presenting library staff: Donna Corbeil, Karen Joseph-Smith, Suzanne Olawski

Audience Participation

Q: Are the stacks integrated into the children's flex space? **A:** The stacks stop before entering the flex space.

Q: Is that on purpose? **A:** The flex space area is to accommodate an active schedule of children's programs and will include window seating. **R:** The Oakland Rockridge Library has both –flex space and stacks.

Show where (on the plan) the additional SF comes from **A:** The additional SF is shown in grey areas (along southern façade bump out).

I like the acoustical separation of areas.

Q: What about the roofline? **A:** Kick-out areas will be extended under the roof.

Q: Is there a sunset date for when funds must be spent? Are there private funding sources? **A:** The City has sold \$10M in bonds (of \$26M total), which are being sold in two phases to coincide with schedule. The Berkeley Public Library Foundation has undertaken a capital campaign to raise approximately \$3M to fund furniture, fixtures and equipment for all branch projects which bond funds cannot cover.

Q: Will you take advantage of the small (140SF) space off the lobby? **A:** It is cost prohibitive to cover both (additional SF along southern façade and lobby space). We'll be getting more SF with the current proposed bump out (along southern façade) than the *Branch Libraries Facilities Master Plan*.

Q: How much more will it cost to fill in the area? **A:** It's roughly \$500 per SF. **R:** \$70,000 to fill in nook? **A:** It will cost more than that if foundation work is required; additionally, the exterior stair is the only access to the basement, which houses the mechanical equipment.

Since the branch is losing shelving the extra space may help to add some more shelving.

Q: Why is there a 28% decrease in shelving? **A:** The branch must become fully ADA accessible and accommodate enlarged restroom facilities per code. Space also is needed for staff operations, which need to be physically separate from the public space to allow them to work more efficiently; additionally, space is needed to accommodate the new dedicated teen room, which will be acoustically separate from the rest of the service areas. Site constraints prohibit the facility from expanding, except for a proposed small bump out. Since the facility cannot expand, space must be carved out of existing areas. We heard from the community during this process, as well as during the facilities master planning process, that seats and tables for reading are mandatory. We can revisit this and remove seating to make more room for shelving.

Q: What about the collections? **A:** Branch staff currently is weeding the collections for condition, format and turnover –items that have not circulated in several years. Weeded items may be offered to other branches to include in their collections or may be offered to the Friends of the Library. The Library will continue its inter-branch delivery and Link+ services. The redesigned branch will allow for improved functional spaces, including more shelving for holds, new browsing shelving that displays and highlights collections, new media shelving, less congested lobby space, increased seating and a variety of seating type, and more computers with space around them.

Q: Why wasn't the children's collection reduced in proportion? **A:** We're still looking at the branch collections; however, we know that children and their caregivers usually come to the library to browse for books, often leaving with armfuls of material while adults usually come for specific titles but may do some casual browsing. Adults generally will place holds for desired titles while children will not.

Q: Is there a large fence around the proposed back deck? **A:** There is an alarmed gate, which will be used as a secondary (emergency) exit. The property will continue to be fenced.

Q: Where are the added computers? **A:** Additional computers will be added to the adults, teens and children's areas.

Q: Are all the children's tables in the flex space? **A:** There also is table seating in the stack space by the children's computers.

Q: What type of roof materials will be used? **A:** Materials have not been determined yet but the same materials will be used on both buildings (historic and addition).

Q: Can the mezzanine be used for office space? **A:** An elevator would be required. The space only can be used for either storage and/or telecom equipment.

Q: Is the basement dry? **A:** We still are exploring this.

Q: Is there a place for meetings with multimedia? **A:** It is feasible to use the children's flex space which will have multimedia capabilities. Additionally, there is flexible meeting space planned in the adult area as well, accommodating from 16 to 20 participants for branch sponsored programs and events.

Q: Is the teen collections in the teen room? **A:** Yes.

Q: Where are the magazines for adults? **A:** Periodicals are located in the lounge area by the fireplace.

Q: What are those items on the diagonal (in Lobby Services)? **A:** They are material display units which will hold best sellers, DVDs, CDs, and new books for adults.

Q: What happens with the historic entrance nook? **A:** We're proposing to glaze it and make it into a reading nook and reuse the existing brick to make exterior planters. We're trying to grab as much space as possible.

Q: Can you see out of the reading nook? **A:** Yes, it will be glassed-in.

Q: Will we get more sidewalk space? **A:** No. The footprint will stay the same.

Q: Is the traffic flow going to change? Where are the bike racks? **A:** Vehicular traffic will not change. It's proposed that the bike rack stay in the same place as it is now and the rack itself does not need to be replaced.

Q: What about the (Library) sign (corner of Ashby and Benvenue)? **A:** We have not looked at signage yet.

There are signs along the street side where I park my bike. **A:** The street signs will stay.

Q: How are the pavers permeable and where does the water go? Will it run under our houses? **A:** There are holes in the pervious concrete which allow the rain water to pass through to a layer of gravel where it may be stored or permitted to percolate into the underlying soil. It's a sustainable design and it will not run off into the neighboring properties.

Q: What happens to the seating along the front (Benvenue Ave)? **A:** The ramp will extend into the existing seating area which will need to be relocated.

Q: Is there seating proposed along Ashby Ave? **A:** Yes. Either seat pads or benches are proposed.

Q: Are the single seats (pads) 24" square? **A:** Yes. They will be of natural material that will relate to the existing landscape.

Hope we get more benches on Benvenue Ave. People use the current benches a lot. **A:** We're looking into comfortable benches, "soft seating," which will encourage multiple seating but will discourage sleeping.

It would be nice to have the library more visible from Ashby Ave.

Move the landscaping to the Ashby side to allow for more seating out front (on Benvenue Ave).

I wouldn't want to sit on the Ashby side because of the busy traffic and exhaust fumes.

People like to congregate on Benvenue Ave.

The current Information kiosk (outside the entrance) is unsightly and should be replaced. Move it to the Ashby Ave side.

The kiosk can be smaller and replaced with something more up-to-date.

Like the kiosk function –it's very Berkeley- but want it prettier

Q: Can the City budget maintain the landscape? **A:** The Library contracts for landscaping services, excluding tree maintenance. The City handles tree pruning.

Q: What percentage of the budget goes to the outside landscaping? **A:** A small amount –approximately \$200,000. We'll get another cost estimate during the schematic design phase and then will reassess the exterior budget.

Q: What about the exterior lighting? **A:** We're looking at replacing the luminary and improving exterior lighting.

We love the redwoods but at least one may be diseased and will need to be removed. **A:** We will have the trees' conditions assessed and will keep the healthy redwood.

Please make sure there is proper handling of rain water from the rear of the building (western façade). There is a stream through my property when it rains as water is not being directed to the street.

Q: Will the deck be landscaped. **A:** No. There is not a lot of room.

Q: The current (front) stairs are brick and slippery, especially when covered with leaves. Will you do anything about the stairs? **A:** Yes. The front stairs will be replaced.

Q: Do the sycamores have to stay? **A:** We'd have to give serious thought to removing mature trees.

Q: Will there be solar in the roof? **A:** We're looking into energy generation options.

Berkeley Public Library – Branch Improvement Program – Audience Comments and Survey Responses
Claremont Branch Community Meeting – Schematic Design (Meeting 4)
February 3, 2010
6:30-8:00PM / Claremont Branch

Comments

- Sounds very good; nice presentation and thank you for answering all my questions
- I hope that the Foundation / private outreach to raise (hopefully) complementary or leveraged money goes well [it's a timing thing –sensitive when to ask for the money and when the critical need is]; I'd be glad to lend any sort of hand if folks already embarked on the effort to raise money could use it
- Any hope of using volunteer labor on planting? --A huge multiple Eagle Scout community service thing –if not more trouble than it's worth
- Thank you for your time and energy
- Bookshelves on rollers on perimeter of flex-room would inspire, function and add to the room tremendously
- Any thought on refurbishing the original front entry and having that be an entrance?
- Looks like great changes
- One concern: storytime is such a small percentage of time when the library is in use. If the flex children space could have some books, families would use that space during programming and in times w/out programs. Also, something to keep kids occupied during programs. Oakland/Rockridge is a good example of this.
- I'm a bit concerned about the 25% reduction in shelving for adults and teens. It's important to keep the option open for a meeting room large enough to hold neighborhood discussion groups and meetings like the one we had tonight.

Surveys

1. What were three things that you heard today about the project that were most memorable?

Roof still needs to be determined

Outside plantings sound great and nice displays

The idea that the “specialty” [not to the exclusion of other things, of course] of the branch will be for younger set –adult collection shrinkage makes sense

2. What three issues do you consider most important to the Claremont Branch Library?

Continued pacific and positive relations among “stakeholders,” staff, patrons, readers, computer users, sleepers, WiFi-ers, etc

Once construction starts, hit it hard and rapid progress

Figure out the creek issue –why is there a bit of unevenness in perception of where / what it is?

3. What did you like most about the community meeting?

Good audience and nice overall supportive feel of a big and somewhat disruptive and not dissuasive project

4. What did you like least about the community meeting?

I arrived 20 minutes late

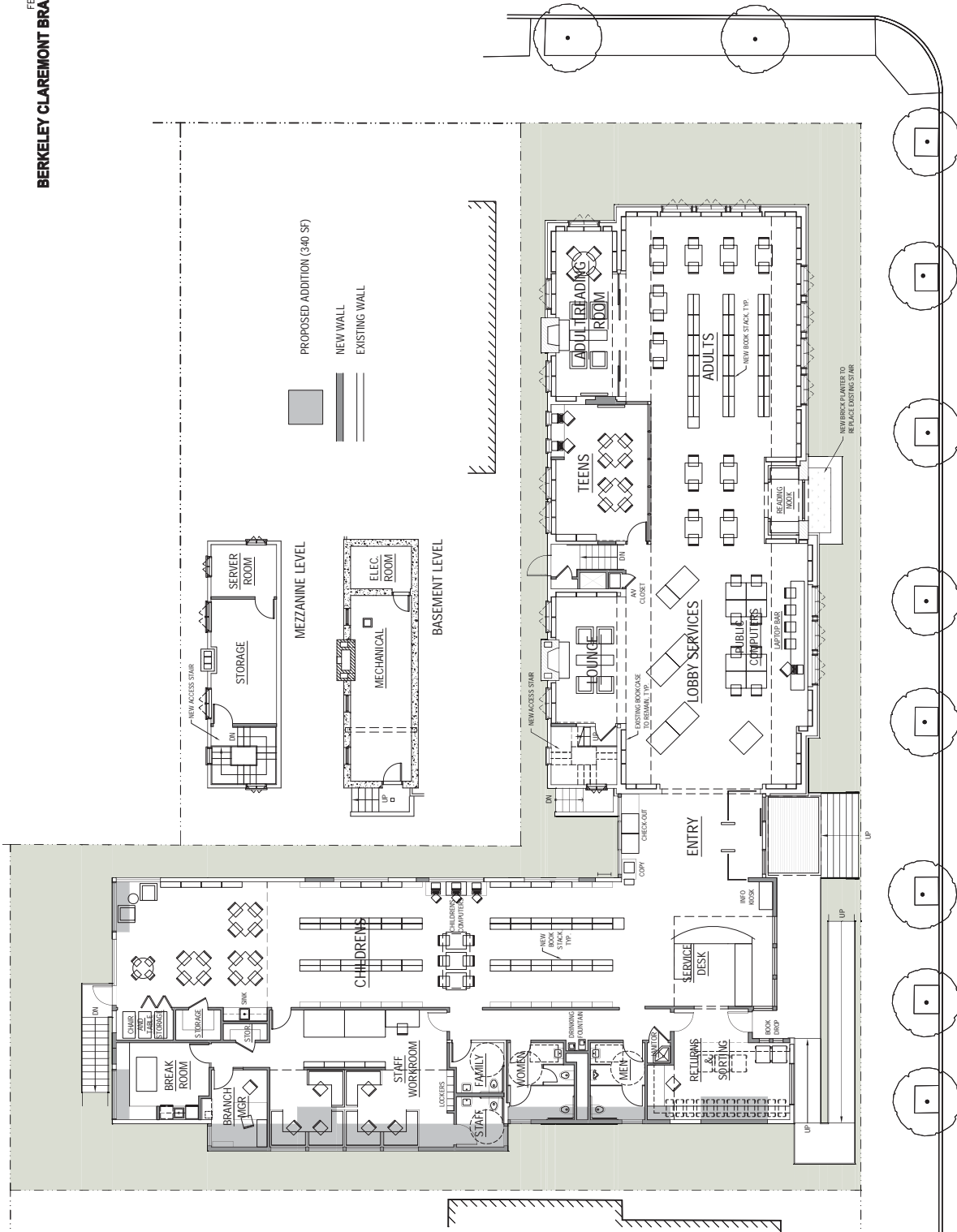
5. Is there anything you would like the project team to know that was not said at the meeting?

Good luck

What about having someone videotape digitally –capture the project—“construction” cam

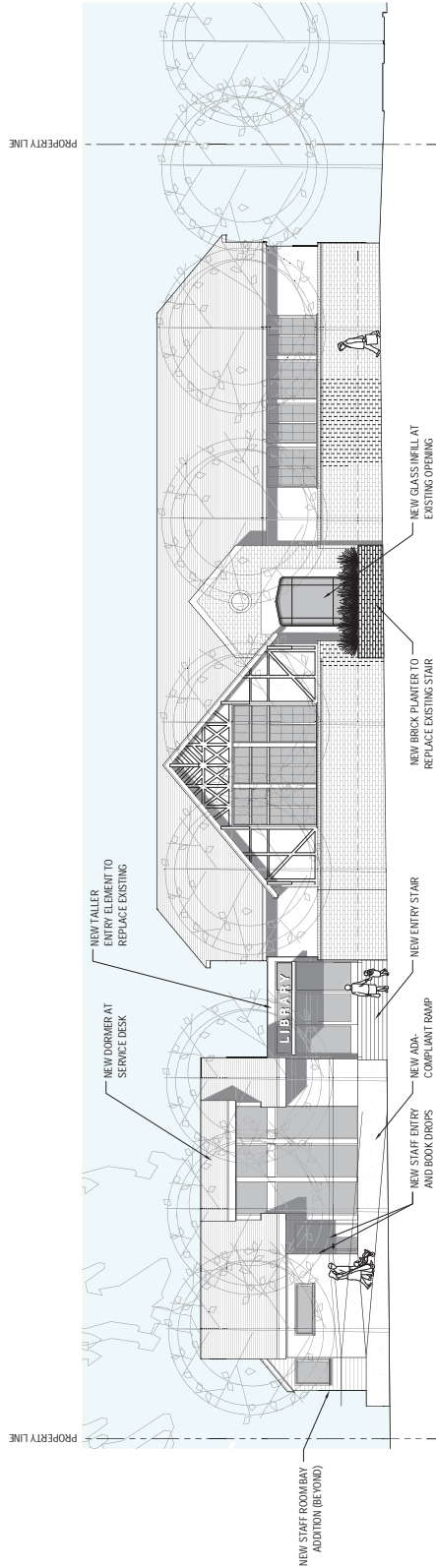
FEBRUARY 10, 2010
BERKELEY CLAREMONT BRANCH LIBRARY

**GOULD EVANS
BAUM THORNLEY, Inc.**
95 brady street
san francisco, CA 94103
tel. 415.253.1411
fax. 415.253.1411



Floor Plans

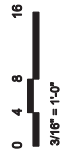
Schematic Design

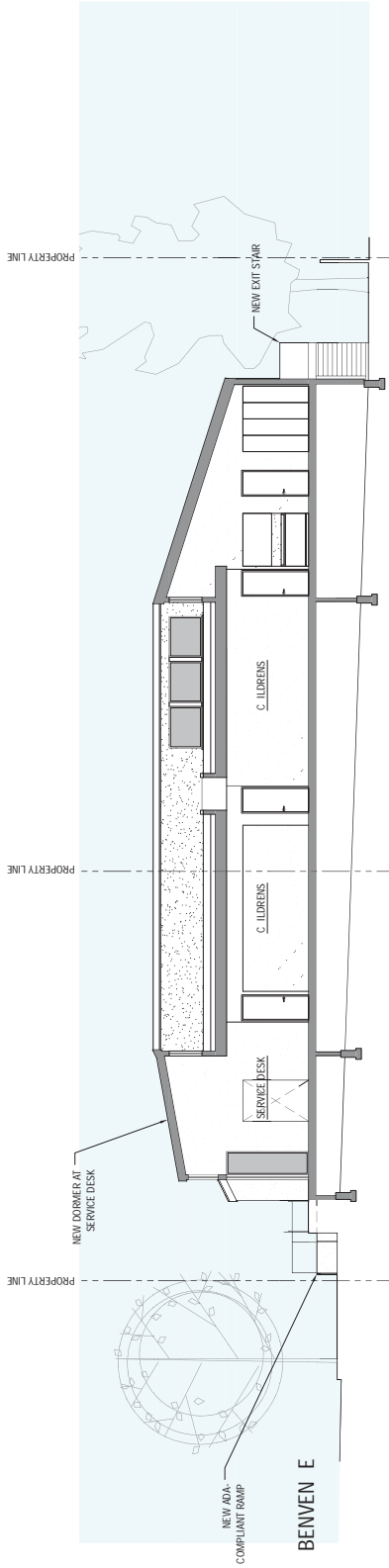


East (Benvenue) Elevation

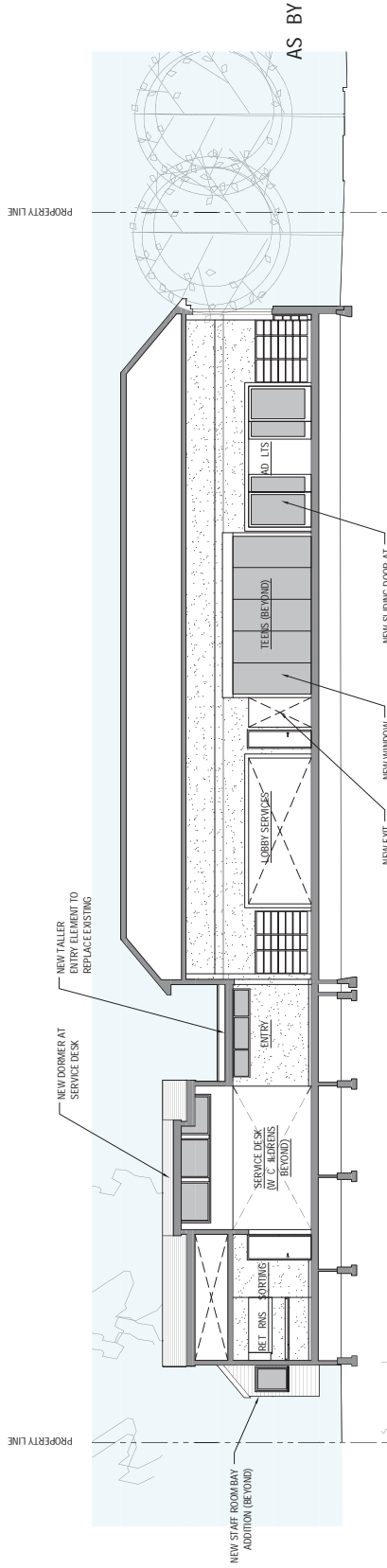
East (Benvenue) Elevation

Schematic Design





East / West Section through 1970s Wing



North / South Section through 1920s Wing

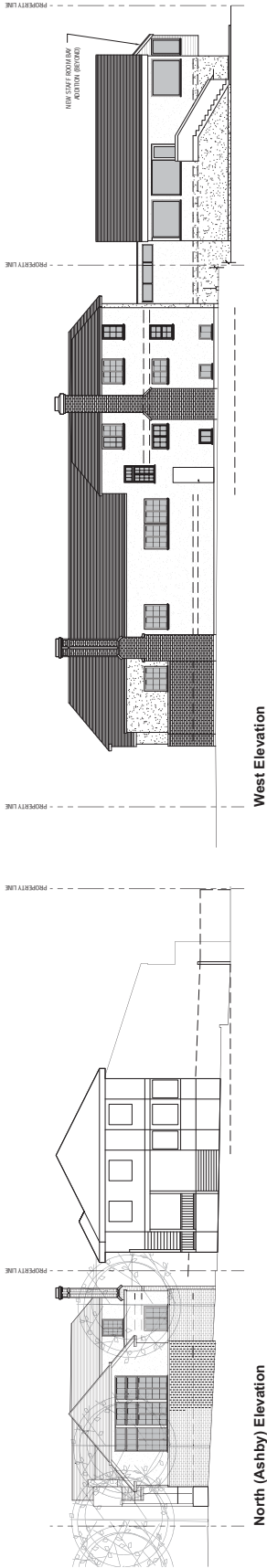
East (Benvenue) Elevation

Schematic Design



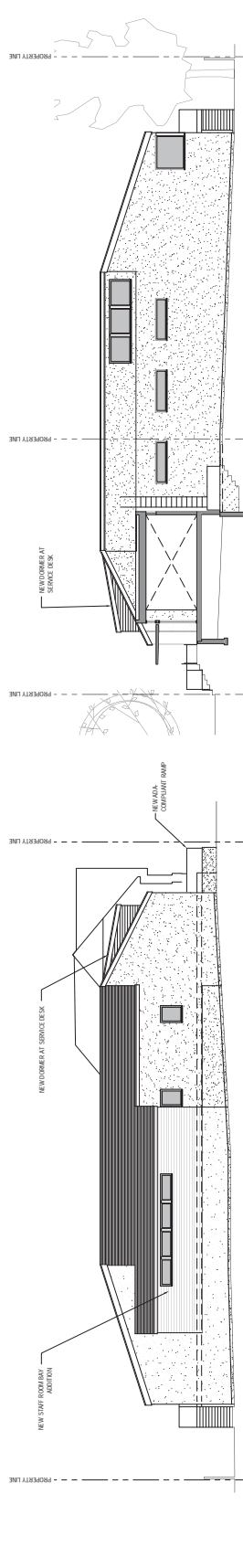
GOULD EVANS
BAUM THORNLEY, Inc.
95 Third Street
San Francisco, CA 94103
Tel: 415.205.1411
Fax: 415.205.1411

FEBRUARY 10, 2010
BERKELEY CLAREMONT BRANCH LIBRARY



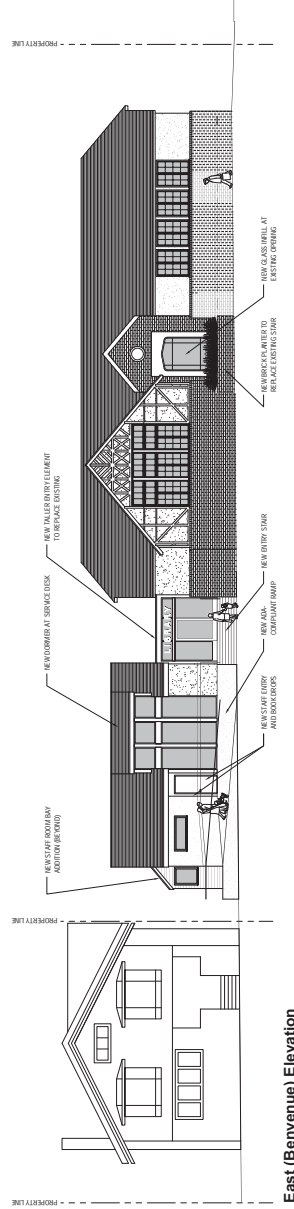
West Elevation

North (Ashby) Elevation



North Elevation (1970s Wing - Section through Entrance)

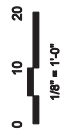
South Elevation

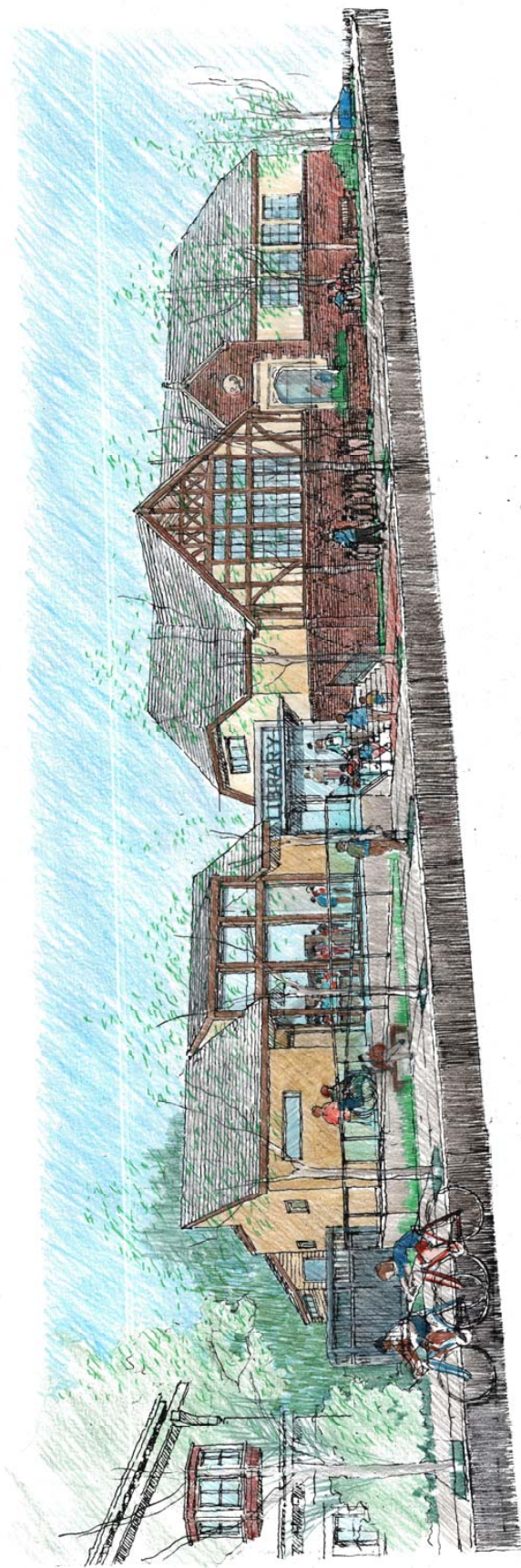


East (Benvenue) Elevation

Exterior Elevations

Schematic Design





Benvenue Perspective

Schematic Design

Highlights

- Technology Improvements:
 - table-top access to power at some reader tables
 - space and equipment for Library laptop lending service
- New Children's Flex Space:
 - accommodation for children's programming
 - new window seats
- Service desks:
 - efficient, ergonomic self-checkout / return and self-service reserves
- Staff work areas:
 - physically and acoustically separated from public space
 - ergonomically sound furniture and equipment
- Exterior deck at the rear yard

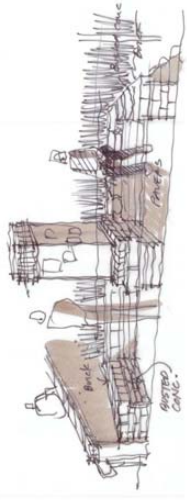
Summary

	Existing	New	Δ
Seating	61	72	+11
Computers	11	14 + laptop lending	+ 3
Shelving (LF)	4027	2882	-1145
Main Floor (GSF)	6967	7307	+ 340
Basement	400	400	
Mezzanine	300	300	

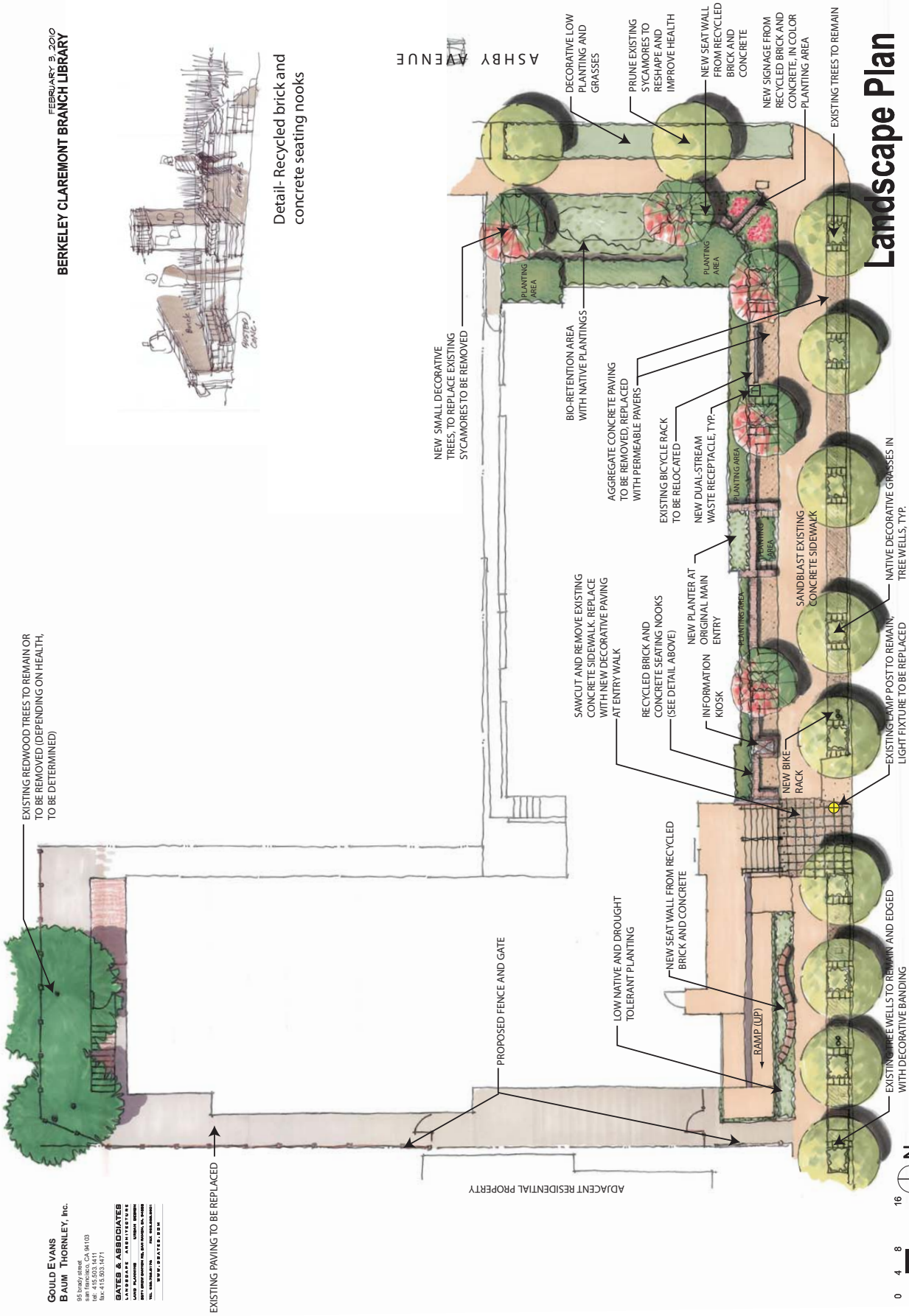
Program Summaries

Schematic Design

FEBRUARY 9, 2010
BERKELEY CLAREMONT BRANCH LIBRARY



Detail- Recycled brick and concrete seating nooks



Landscape Plan

Schematic Design

GOULD EVANS
B AUM THORNEY, Inc.
58 Broadway
New York, NY 10038
Tel: 212.512.3000
Fax: 212.512.3001

GATES & ASSOCIATES
LANDSCAPE ARCHITECTURE
10000 Wilshire Blvd., Suite 1000
Beverly Hills, CA 90210
Tel: 310.274.1100
Fax: 310.274.1101



HARLEY ELLIS DEVEREAUX

MEMORANDUM

10 February 2010

Funding Solar Photovoltaic System for the West Branch Library Project

The Zero Net Energy design of the West Branch Library requires the installation of a solar photovoltaic system to provide the electrical power for the building's loads. This PV system will be connected to the electrical system provided by PG&E, so that the building's system can both draw from (when needed) and supply electricity to the PG&E grid as appropriate to the availability of solar energy at the site. By design, the net amount of electrical energy drawn from PG&E will be zero over the course of a typical year.

HED/GWS estimates that 2,000 sq. ft. of PV solar panels will be required. The installed cost of this system is estimated to be \$140,000 in mid-2012 (+/- 20%), the date that bidders will likely use for their project construction bids.

The following are the options available to cover this cost:

1. **The construction budget itself.** At this point in the project, we are not ruling out that rigorous design will provide enough cushion in the budget to include this large cost item.

2. **Savings-by-Design program (PG&E).** Funds will be provided to BPL for the very low energy demand created for this building. It is expected that this amount will be on the order of \$10,000.

3. **California Solar Initiative (CSI).** This initiative offers cash payment based on the size of the system and time of application (payment amount declines over time as more customers apply for the limited amount of funds). For the size of the West Berkeley Library system, the cash payment is estimated to be \$22,000. (Note: this could increase with later rulings by the CPUC. When the program was initiated, the WBL system would have received \$50,000.)

4. **Demand-Response Incentive.** A cash payment is given to a customer that installs equipment or control software that allows PG&E to dial back the power supplied to WBL in the event of a brown-out. A ZNE building can coast through such an event without discomfort or inconvenience to the users or staff, so this is a worthwhile incentive. The amount of this incentive is still being determined, but is not expected to be very large.

5. **Third-Party Provider Agreement.** The City of Berkeley would sign a contract with a private provider (PPA) such as Chevron Solar to install the full system. Basically, the City would be leasing the system and paying the PPA instead of PG&E for its electric bill. The advantage is that the PPA would be responsible for the system contractually and the monthly payment would be fixed—no increases in the future, which are likely with PG&E. Thus the PPA agreement would protect the Library's operating budget by making electrical energy a fixed cost for the duration of the contract.

Note: This agreement means that the PPA would receive the CSI incentive described in #3 above. However, this payment is used to reduce the cost of the "lease" to the owner.

This option is preferred by public institutions that do not have funds to cover the initial construction cost. LACCD and Contra Costa Community College District have signed contracts with Chevron Solar for PV installations. In addition, Fresno State University, San Jose USD and Milpitas USD have also used PPA's to fund the systems.

6. **Unknown Possibilities.** The project will start construction in late 2011/early 2012. By that time, additional incentives and subsidies may be available, including City of Berkeley (Berkeley FIRST program or targeted incentive for this project), federal incentives. Project budget increase to cover any shortfall in PV system cost not covered by project budget plus solar incentives?

2430 5th Street, Studio M
Berkeley, California
94710 USA

t 510.644.2814

f 213.542.4515

harleyellisdevereaux.com

Planning
Architecture
Engineering
Interior Architecture
Landscape Architecture
Construction Services

Partner Company:



Berkeley

Los Angeles

San Diego

Riverside

Chicago

Detroit



BERKELEY PUBLIC LIBRARY

INFORMATION CALENDAR

March 10, 2010

TO: Board of Library Trustees

FROM: Donna Corbeil, Director of Library Services

SUBJECT: MARCH 2010 MONTHLY BRANCH IMPROVEMENT PROJECT REPORT FROM LIBRARY DIRECTOR

INTRODUCTION

Every month the Library Director gives the Board a report on branch improvement activities and updates from the previous month.

FISCAL IMPACT

This report will have no fiscal impacts.

SUMMARY OF WORK

During this reporting period the following community meetings were held:

- February 24th North Branch Schematic Design

The Page + Moris Contract Amendment approved by the board on January 13, 2010 approved by council as a consent calendar item on February 23, 2010.

Other meetings held during this reporting period include:

- Weekly project meetings facilitated by the KCEM project manager, Steve Dewan
- Meeting with City's Planning Department and architects as needed

Landmarks Preservation Commission

Staff and consultants attended the March 4, 2010 LPC meeting, with informational items related to the West Branch and North Branch projects:

<http://www.cityofberkeley.info/ContentDisplay.aspx?id=50380>.

Library Building Program

During this reporting period the final building programs for each branch project (4) have been completed and copies distributed to respective design teams electronically and in paper format; branch staff has one master paper copy held at the branch and a file copy is maintained in the administrative offices.



COMMUNICATION

Staff held a community focus group of Spanish speakers. This is the final in the series related to the bond program (Attachment 1). These efforts have helped to inform the library's building program process by identifying unique library needs among Berkeley's diverse populations.

WORK ANTICIPATED

Landmarks Preservation Commission

From the discussions at our LPC subcommittee meetings we have asked for the following dates to present to the full group:

North Branch Structural Alteration Permit application April 1, 2010

Claremont Branch informational presentation April 1, 2010

Upcoming Community Meetings

Claremont Branch Design Development Community Meeting, March 31, 2010

KEY PROJECT ISSUES

See Informational item on Bookmobile.

ATTACHMENTS:

1) Branch Renovation Spanish Speakers Focus Groups Fall 2009

Focus group for Spanish-speaking community
January 21, 2010

Location: Willard Middle School, during a meeting of the BUSD's LUNA parents group
Staff in attendance: Doug Smith, Alan Bern, Angela Gallegos-Castillo (translator)
Community members present: 23

How many use the Library? About ½.

Do you have computers at home? Nearly all do. One said she did not have a printer and uses the library for printing. Also: use the library computers as back-up to their home computers.

Collections:

- Larger Spanish-language collection
- Newer titles (current collection too old)
- Place the language collections in more prominent locations. They are difficult to find now.
- Audiobooks in Spanish
- Magazines in Spanish, for adults and kids
- Newspapers in Spanish
- Subjects:
 - More biographies of famous people from Mexican history, e.g. Hidalgo, Juarez, etc.
 - Latin American history
 - Job-seeking
 - Sports
 - Novels

Programming/events:

- Author appearances by Spanish-speaking authors
- Children's programming (e.g. puppet shows) in Spanish
- Family reading night
- Classes for youth on how to read a newspaper
- Spanish language book groups
- More publicity in Spanish about events, e.g. the BUSD e-tree
- Workshops at the Tool Library: basic skills for adults and kids. Even willing to pay a sliding-scale fee for these.

Services

- More computers
- More controls on computers--restrictions for young people, e.g. no access to social networking sites
- Expanded hours—open earlier & close later
- Spanish language reader's advisory

Facilities:

- More parking (@South)
- Outdoor spaces—a garden or patio, where young people can be
- Exterior security to prevent vandalism
- A designated “Quiet Room”



BERKELEY PUBLIC LIBRARY

INFORMATION CALENDAR

March 10, 2010

TO: Board of Library Trustees

FROM: Donna Corbeil, Director of Library Services
MARCH 2010 MONTHLY REPORT FROM LIBRARY DIRECTOR

INTRODUCTION

Every month the Library Director gives the Board a report on Library activities and updates from the previous month.

FISCAL IMPACT

This report will have no fiscal impacts.

LIBRARY DEVELOPMENT

Annual Report

The Library has completed the 2009 Annual Report. Alan Bern, Community Relations Librarian worked with a graphic designer to complete the layout and design. It was distributed and posting on the Library's website in February 2010. the contents fo this report are drawn from the Board's annual report to council.

PROFESSIONAL ACTIVITIES

Douglas Smith, the Library's Deputy Director attended a professional event at San Francisco Public Library featuring a talk by the American Library Association President, Camila Alire (Attachment 1).

PLP

In May 2009, a Joint Powers Agreement was signed to create the Pacific Library Partnership (PLP), this is a cooperative between library systems, including Monterey Bay Cooperative Library system (MOBAC), Bay Area Library and Information System joint powers agency (BALIS) and Silicon Valley Library System joint powers agency (SVLS). Berkeley Public Library is a member of BALIS. An executive committee was formed at this time, and by-laws approved by the group. Since this time the staff of the three systems and the executive committee have been working on furthering the development and organization of the new collaborative. The firm Management Partners Inc. was engaged to lead a strategic planning process with member libraries. The Director attended two workshops, February 8th and March 1st, held with representatives from all member libraries at the San Jose Public Library. At the annual PLP members meeting planned for May 14, 2010 the final plan will be voted on by members.

PROGRAMS, SERVICES AND COLLECTIONS

Public Programs

The Art and Music section of the Central Library sponsored two well-attended noon concerts in February. On Feb. 11th, Berkeley Opera's Artistic Director, Mark Streshinsky, and cast members present highlights from the company's upcoming production of Mozart's masterpiece, Don Giovanni. On the 18th, Baritone Autris Paige in an account of the journey from slavery to freedom as told through African-American spirituals.

The Alameda County Small Business Development Center led another well-attended workshop at the Central Library on March 2nd, attracting forty-five local business owners for a talk on Retailing Basics for Entrepreneurs. This is the eighth workshop in the series offered by the SBDC. The topics in this series were chosen by the SBDC, our Business Librarian, Tom Dufour and the City of Berkeley Office of Economic Development as those most relevant for local business owners. This series is an example of how the Library is responding to the economic needs of many who are exploring entrepreneurship during the current recession.

PERSONNEL

Labor Relations

The Director attended an all day City of Berkeley Labor Management Retreat scheduled for day Friday, February 5, 2010.

BOLT

As approved by the board the staff has set-up a BOLT email address to receive correspondences. Also, as instructed by the City clerk's office, new language was added to all commission agenda templates and other documents posted for the public concerning board activities. The language describes that communications to Berkeley boards, commissions or committees are public record and that e-mail addresses, names, addresses and other contact information, if provided, also become part of the public record. This is not a change to City policy, rather the goal of language is to provide clarification to the public that communications are in fact public information and are not redacted.

New statement:

Communications to Berkeley boards, commissions or committees are public record and will become part of the City's electronic records, which are accessible through the City's website. **Please note: e-mail addresses, names, addresses, and other contact information are not required, but if included in any communication to a City board, commission or committee, will become part of the public record.** If you do not want your e-mail address or any other contact information to be made public, you may deliver communications via U.S. Postal Service or in person to the secretary of the relevant board, commission or committee. If you do not want your contact information included in the public record, please do not include that information in your communication. Please contact the secretary to the relevant board, commission or committee for further information.

FACILITIES

Self check RFP Update

The request for proposals was posted on the city's website on 2/08, as noted it closes March 18th:

[10-10501.pdf](#)

Self-Check Materials Security & Automated Materials Handling
Systems

[Exhibit A](#) - Sample of Professional Services Contract

[Exhibit B](#) - Sample of Personal Services Contract

ATTACHMENTS:

1. Report by Doug Smith, Deputy Director 2/19/10 professional lecture
2. CALTAC workshop summary

Attachment 1

On Feb. 19, I attended a talk by American Library Association president Camila Alire at the San Francisco Public Library's Main Library entitled *The New Normal for Libraries? Leading During Changing and Challenging Times*. The presentation was a portion of SFPL's Leadership Academy to which members of the Bay Area library community were invited to participate. Ms. Alire is Dean Emerita at the University of New Mexico and Colorado State University, and is the first Latina president of ALA. *Hispanic Business* magazine has named her as one of the 100 most influential Hispanics in the US.

Her talk was an interesting general summary of what she views as the prime trends and challenges facing libraries in the current economy, and how library staff--both managerial and frontline staff--can deal with the opportunities and responsibilities brought on by a "new normal" context libraries find themselves in during the current economic recession.

These are the major trends she outlined, all of which are relevant for the Berkeley Public Library and the Berkeley community:

1) Socio-demographic trends affecting libraries

- The expectations of "Generation Y" regarding the availability of technology in their lives: the ubiquity of mobile devices and electronic media as an organic part of the lives of people has tremendous implications on how libraries are staffed, operated, and designed. As we all know these expectations are vastly different from those of previous generations.
- Rising life expectancy: while libraries are responding to the needs of younger people, they are still needing to serve our elders, who frequently have more traditional notions of what library services should look like. These competing needs also have an impact on decisions libraries must make about service design and the allocation of resources.
- The retirement/unretirement of the boomer generation: this phenomenon is affecting libraries internally, in that library staff retirements are being deferred due to the present economic conditions and postponing the generational change within the profession that many had been anticipating. There are fewer professional jobs available for new MLS graduates, making the ascent up career ladders a more complicated and slow process than in previous eras.
- The increasing economic and political impacts of diversity and immigration upon our society: Libraries must reach the underserved groups in our communities. The core mission of public libraries is to help develop an informed society--the presence of a large underserved populations within our service areas is a disservice to our communities.

2) Tech trends affecting library services

- The Internet continues to transform government and business operations as well as the "service arena", which would include libraries.
- The explosion of social media has created a challenge for all organizations and businesses to stay near the leading edge of this area of culture, particularly with the quickly evolving array of mobile devices available and the opportunities they offer for library-sponsored media such as blogs, wikis, RSS feeds, and Facebook pages.
- To this I would add the changing formats which communities expect libraries to offer information and library collections in. Libraries have long struggled to anticipate and meet those needs, and wrestled with difficult resource allocation choices resulting from these changes.

3) Economic trends

- Of course, many factors in the current economy are having a direct impact on libraries: the growing risks and uncertainty in financial markets, rising US personal and federal debt, and declining personal income all affect public-supported institutions. Education levels are falling behind employer expectations, leading many towards their public libraries to seek out educational opportunities. And, changing patterns of wealth and savings are being felt by friends groups, library donors, and at the voting booth when library tax measures come up.

Ms. Alire also addressed what she sees as the principal challenges facing libraries in the "new normal"--the good, bad and the ugly:

1) The good: Nationwide, public library usage is increasing during the economic downturn. In the comparatively mild recession of 1999-2000, libraries saw an increase of 8.3%; during the current recession some libraries are seeing increases of over 25% in circulation, visits, and program attendance. Libraries have been extremely nimble in responding to this challenge, designing new services and programs and securing funding to support them.

2) The bad: this terrible downturn affects all libraries. Nationally there has been a 3.6% decrease in property tax revenues, alongside similar decreases in sales and income tax receipts as well.

3) The ugly: "When the trough goes dry, the horses start biting"--the need of individual municipal services to share declining resources has increased internecine competition, often with public safety departments winning out, and underlining the need for library advocates to broadcast widely the message of libraries' indispensability.

She asked: what exactly is the "new normal" for libraries? The economy presents enormous challenges now, and even after we turn it back around again, as a nation we won't be back where we were before the crash began. When the funding pie gets smaller, library managers must make difficult decisions about cost-saving reductions while trying to meet increasing demands from users.

So, how can libraries deal with this "new normal"? Identify common goals and work toward them. The most fundamental of these is to provide the best services to your specific community of users. Managers must work with staff to change expectations of what is possible under the present straitened conditions, and to do so with trust and respect. She greatly emphasized the importance of emotional intelligence in library leaders at a time like this, to identify goals with a clear vision and empathy, and to use those skills to motivate staff when they may feel least motivated. Lines of communication must be kept open so library staff feel free to share ideas and managers aren't making crucial decisions in a vacuum. Staff should be encouraged to think creatively, to seek out new opportunities to learn, and new ways of doing things within the context of innovative service plans for their library.

Report prepared by Doug Smith

Attachment 2

CALTAC Workshops (Summary by Richard K. Moore, Huntington Beach, CA)

Seventy library supporters turned out in Berkeley on February 27 for the first of **two** CALTAC Spring Workshops.

With greetings from Senator Loni Hancock, City Councilman Gordon Wozniak, and Library Director Donna Corbeil, we were quickly under way and highlighting the aspects of library construction and renovation that brought communities together in common cause.

CALTAC Past President Alan Smith introduced the panel, which included:

Therese Powell, co-chair of 2008 Berkeley Library Campaign;

Evette Davis, Campaign Consultant;

Anne Grodin, former Lafayette Mayor and community volunteer;

Jewelle Gomez, San Francisco Public Library Commission President, Director of Grants & Community Initiatives, Horizons Foundation.

Each panelist spoke to the efforts, which enabled each of their communities to renovate and expand services. Each had advice for replicating success in every community.

Deborah Doyle structured a discussion period after the panel that enabled participants to focus on where they were and what they hoped to accomplish. Sharing their thoughts brought the best ideas of all to the entire group.

advertisement | your ad here

home of the

Subscribe to the weekend Chronicle

SEARCH

SFGate Web Search by YAHOO! | Advanced Search

Sign In | Register

Movies Music & Nightlife Performance Art Events Books TV & Radio Horoscope Comics Games Things To Do

A little bird told Huffington about WildCare

Catherine Bigelow

Wednesday, February 10, 2010

PRINT E-MAIL SHARE COMMENTS (0)

FONT SIZE: - +

Born free: Like the (current) business models of Twitter and the Huffington Post, so, too, are wild animals free.

IMAGES



View Larger Images

But that's not why **Arianna Huffington** emceed the WildCare gala on Friday at the Mill Valley Community Center.

The Huff-Po editrix learned of the San Rafael organization from a pal, Twitter co-founder **Biz Stone**, whose wife, **Livia Stone**, manages WildCare's

hospital.

"In our country, in our world, there is nothing we need more than empathy," said Huffington during the sold-out dinner that, wisely, starred a vegetarian McCall Associates feast.

"The work of WildCare might start with a hummingbird," Huffington continued. "But that empathy spreads out around the globe."

WildCare treats more than 4,000 ill, injured and orphaned wild animals and provides nature education.

The gala was ably organized by **Susanne Lyons** and **Cindy Testa-McCullagh** (another Huffington pal) and raised \$200K toward a new WildCare facility.

Huffington was thrilled to be surrounded by the majestic beauty of nature. Especially as she was just back from the World Economic Summit in Davos, Switzerland.

"Most everyone had a knot in the pit of their stomachs," said Huffington, describing the mood of attendees, leaders we'd assume had the world's problems sorted out. "There's a sense of waiting for the other shoe to drop. So thank God we have these wild animals in our world."

Making book: Bibliophiles and belletrists filled the stacks Saturday at the Berkeley Central Library for Roots and Branches: The Eighth Annual Authors Dinner.

The sold-out gala featured 30 renowned scribes (**Charlie Haas**, **Tamim Ansary**, **Katie Hafner**, **Daniel Mason**, **Frances Dinkelspiel**) and benefited infrastructure needs at soon-to-be renovated branches.

Chairwoman **Linda Schacht Gage** was supported in her writer-wrangling efforts by author and honoree **Michael Lewis**. And emcee **Bill Schechner** delighted the crowd in introducing himself as the numbers on his library card.

But the root of the evening belonged to **Pat Cody** and Heyday Books' **Malcolm Margolin**, who was honored with the Fred & Pat Cody Award.

Pat and her late husband, **Fred Cody**, founded the now late (and lamented) Cody's Books. When it opened in 1956, Cody's instantly became a hive of community action and a pioneer among independent booksellers.

"The foundation thinks I'm going to talk about how great public libraries are," joked Margolin. "Actually I'm going to talk about Fred Cody, my dear friend and inspiration."

Margolin recalled meeting the Codys in 1974 when he arrived at their store with a stack of his self-published book.

"Fred threw his arm around me, took 20 copies and put them at the register for sale," explained Margolin. "And I thought to myself, 'Isn't publishing great?' "

British Invasion: At Thursday's kickoff for the Mostly British Film Festival at Thomas Pink, guests gamely ogled the British haberdashery's colorful textiles.

The drizzly, veddy London-like weather, however, had folks wishing for a particular item of clothing: rain slickers.

Atmospherics aside, nothing could dampen the enthusiasm for this indie flick-fest, which closes Thursday at the Vogue Theatre.

"The film 'London River' is most provocative," said British Consul General **Julian Evans**. "This festival expertly mixes films and genres to express a common spirit of cultural exchange."

Dreamed up by S.F. Giants execs **Alfonso Felder** and **Jack Bair**, the festival benefits the San Francisco Neighborhood Theater Foundation, which was also founded by this dynamic duo in order to save the old Vogue on Sacramento Street.

"We decided to create a foreign film festival," said Bair, laughing, "that didn't need subtitles."

Chronicle society correspondent Catherine Bigelow's columns appear Wednesday in Datebook, Sunday in Style and at SFGate.com. E-mail her at missbigelow@sfgate.com.

This article appeared on page E - 2 of the San Francisco Chronicle

advertisement | your ad here

home of the

Subscribe to the weekend Chronicle

SEARCH

SFGate

Web Search by YAHOO!

Advanced Search

Sign In | Register

Don't Miss: Is boredom deadly? Poop: Parenting afflictions Poodle's dental work Power Rankings! First lady's campaign Winter Olympics page

MISS BIGELOW'S SOCIAL CITY

← Arianna Huffington &... | Main

Book 'em: Berkeley Public Library Authors' Dinner

Love. Tragedy. History. War. Religion. Science. Poetry. Philosophy. Apocalypse. Comedy. Even math; if you want it.

All this, and more, can always be found within the stacks of your local public library.

And like those stacks, there was a topic to suit every guest Saturday at the *8th Annual Authors' Dinner* in the Berkeley Central Library where 30 renown authors were honored at this fun-raising event.



All photos by Catherine Bigelow

The colorful stacks in the historic Reading Room of the Berkeley Central Library

Leading the charge was Heyday Books founder-publisher Malcolm Margolin who received the *Fred and Pat Cody Award* which honors people and institutions that support authors, books and literacy.

"It's such a pleasure to be given an award by people who actually know you," joked Margolin of Pat Cody and her late husband, Fred Cody, who founded the much-vaunted, and much missed, Berkeley-based Cody's Books in 1956.



Author Dashka Slater, Heyday Books publisher and honoree Malcolm Margolin and Lee Swenson



Miss Bigelow's Social City

Contact

Follow on Twitter

MyFeeds

You won't believe what happened last night.
By Catherine Bigelow, [Read Bio](#)

advertisement | your ad here



RECENT ENTRIES

Book 'em: Berkeley Public Library Authors' Dinner
Arianna Huffington & Twitter's Biz Stone Give a Hoot for Wildlife
British Invasion: The Mostly British Film Festival
A Little Bird Told Me: Twitter Tidbits
Rawwr: Enter the Year of the Tiger
Hot Tickets & Exhibitions!
A Little Bird Told Me: Twitter Tidbits
iPads vs. Condoms? There's an App for That
A Little Bird Told Me: Twitter Tidbits
Helgi Tomasson's silver lining at the SF Ballet opening-night Gala

[More >](#)

CATEGORIES

ACT (1)
Asian Art Museum (1)
Berkeley Public Library (1)
Charlotte Shultz (1)
design (2)
Fine Arts Museums (2)
Fundraisers (6)
Le Central (1)
Local authors (1)
Lunchin' Ladies (1)
New Year's Day (1)
North Beach (1)
Parties (7)
Project Inform (1)
SF Ballet (1)
SF Neighborhood Theater Foundation (1)
SFMOMA (2)
Twitter Tidbits (4)
WildCare (1)

ARCHIVES

February 10 - 16, 2010

www.globenewspapers.com

THE GLOBE

Business/Education

"FUNdraising Good Times"

By Mel and Pearl Shaw

the most difficult tasks and possible future obstacles so that producing success from scratch becomes simply simple.

Now don't get us wrong,



years ago. First, these institutions provide a level of affirma-



Author Owen O. Daniels in Iraq

United Negro College Fund VP: HBCUs are indi

ing more compelling, more urgent, more immediate than to afford Owen O. Daniels, who recently returned to the United States after serving his second tour of duty in Iraq. Besides rising to the rank of lieutenant



user-friendly text virtually takes you by the hand and walks you through the typical start-up process in sequential fashion.

Thus, it starts by having you

low. These institutions do more with less than most majority in small businessman myself, I was quite impressed overall, and I can guarantee that "The Entrepreneur Guide" arrives stocked with some solid advice.

Auto Warehousing hiring at Port of Richmond

From the Globe News Desk

Auto Warehousing Company is currently seeking to fill up to 30 positions at its Port of Richmond operation.

The company has been in business since 1962 and is now the largest full auto servicing and processing company in the nation. It has operations at various locations in throughout the Unit-

ed States, Canada and Mexico.

Successful candidates must be able to: pass a safe driving and rail safety quiz with a score of 80 percent or better (training will be provided); lift up to 50 lbs. overhead and push, pull and carry up to 85 lbs; climb a ladder and work at heights 15 ft. above the ground; work in confined space with ceilings heights as low as 60 in.; drive both automatic and manual auto-

mobiles; follow instructions and safety standards; and read, write and comprehend basic English.

Applicants must also have a valid driver's license and a good driving record, and be able to pass a physical, drug screen and background check.

Apply in person Monday through Friday from 8 a.m. to 3:30 p.m. at Auto Warehousing Company, 1311 Canal Blvd. Richmond. ©

Job search workshops at Berkeley Public Library

The Berkeley Public Library and the North Cities One Stop Career Center will offer job search workshops on Mondays from 6 to 7 p.m. in February, March and April.

Along with general job search tips, learn how to craft an effective resume and conduct an online job search.

The classes will be held in the third-floor Community Meeting Room of the Central Library, located at 2090 Kittredge St.

Classes will be held on Feb. 22, March 1, March 22, April 5 and April 19. For more information, call (510) 981-6148 or visit www.berkeleypubliclibrary.org. ©

Scholarships available for West County students

From the Globe News Desk

The Ed. Fund college scholarship application for 2010-2011 is now available online at www.edfundwest.org/programs_scholarships.shtml.

Scholarships of up to \$2,500 will be awarded to West County public school seniors

graduating with at least a 2.5 GPA.

Applications are due by Friday, Feb. 26.

The Ed. Fund was founded in 1983 by a group of parents who wanted to ensure that classrooms had the resources they lost as a result of Proposition 13, which shifted funding for

schools from local property taxes to state general funds. The group raises funds to distribute directly to teachers and students in the West Contra Costa Unified School District.

For more information, email The Ed. Fund at scholarships@edfundwest.org or visit www.edfundwest.org. ©

Girls Inc. offers Presidents Week Recess Program

From the Globe News Desk

Girls Incorporated of West Contra Costa County will hold a Presidents Week Recess Program for local girls ages 6 to 14 from Feb. 15 to 19.

Participants will gather each day from 8 a.m. to 6 p.m. at Girls Inc., located at 260 Broadway in

Richmond, for an enrichment program that will include field trips, art, chess, science, tennis, community outreach and more.

Enrollment costs \$50. Breakfast, lunch and snacks will be included. Field trips cost extra.

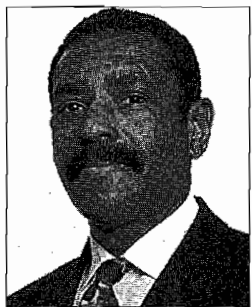
For more information or to apply for the program, call Girls Inc. at (510) 232-5440. ©

Community colleges brace for more budget cuts

Courtesy of Alameda County Supervisor Keith Carson

At the Peralta Community Colleges hope is starting to become scarce. Last year, their budget was cut \$13 million. The 20,000 students that attend Berkeley City College, College of Alameda, Laney College and Merritt College have seen teacher and staff lay-offs, 400 classes cut and class sizes increased from 20 to 40 students.

"The governor is proposing that they do away with the Cal Grant program. That affects 44,000 students in the state of California. Many of our most needy students need that money to get through school," said Abel



Supervisor Keith Carson

Guillen, Peralta Community College Board president. "Some students have to make the decision whether or not they're going to be able to pay their rent or childcare. Some students are

even opting to bring their children to class because they just can't afford to pay a sitter."

Marlene Hurd, former member of the Student Senate for California Community Colleges said, "One of the things that I witness a lot is students lining up for financial aid, and those lines get long. What I see are students who need this service and can't get it. Where do those students go? Some of them may end up dropping out of school and maybe they're right at the end about to graduate and they need that extra cushion to pull them through."

More students are opting to attend community college be-

continued on page 6

Alameda County libraries closed during Presidents Day weekend

The Alameda County Library will close all library locations from Friday, Feb. 12, through Monday, Feb. 15.

During this closure, all library book drops will be closed. Materials may be returned after the holiday — no fines will be accrued during these four days.

The public is asked not to leave library materials outside the buildings during the closure.

Alameda County Library branches are located in the cities of Albany, Dublin, Castro Valley, Newark, San Lorenzo, Union City and Fremont.

For more information, visit www.aclibrary.org. ©

worki
comm
small
businessman
myself,
I
was quite impressed overall, and
I can guarantee that "The Entre-
preneur Guide" arrives stocked
with some solid advice.
C
Fi
Cal
offi
mor
in A
con
Cali
Feb
sevi
enc.
beg.
coll
and
and
begi
to th
To le
Calif
and l
colle
Sund
you t
www
sund
and l
CS

City's Public Library Branches Face Renovations



EDDIE ROSENBAUM/PHOTO

The Board of Library Trustees held a forum Wednesday at the Berkeley Public Library's South Branch to discuss renovating the branches to make them safer and more accessible.

By **MICHAEL PEARLSON**
CONTRIBUTING WRITER
Thursday, February 11, 2010
Category: News > Development and Capital Projects

Correction Appended

The Berkeley Public Library held its last meeting in a series of community forums Wednesday to hear public input regarding the renovation and reconstruction of its four branches, slated to begin in early 2011.

Architects revealed their plans for the renovations, which will include making the libraries more earthquake-safe and handicap-accessible as well as refurbishing historical features.

Residents at the meeting gave feedback and input as to what results they would like to see.

"This is the first time in the history of the Berkeley Public Library that all branches will be simultaneously renovated to be made both seismically safe and accessible as well as brought up to current code," said Community Relations Librarian Alan Bern.

The total cost for the renovation of all branches is estimated at \$26.01. Berkeley-based architecture firm Noll & Tam Architects.

The structural renovations were paid for by the passage of Measure FF taxes over 30 years and provides \$26 million in general obligation bonds.

Related Articles »

- Some Services See Increased Usage Due to Economic Recession - *Tue, Aug 25, 2009*
- Library Granted Exception to City's Nuclear-Free Ordinance - *Thu, Jan 29, 2009*
- Council Holds Vote on Allowing Library an Exception to Nuclear Ordinance - *Wed, Jan 28, 2009*

[Printer Friendly](#)
[Comments \(0\)](#)
[Email/Share](#)

Recent:



The Daily Cal Chooses Evocative as our Web Host

Using our Free Discount Card Saves You Money!

Watch for our Street Teams or Pick One up at our Offices, 600 Eshleman Hall, UC Berkeley

THE DAILY CALIFORNIAN
Berkeley's Newspaper

Job Postings

Daily Cal Job Board

- Operations Engineer
Admeta
- Director Business Development Germany
Admeta
- Product Analyst - Unique Content
Kosmix
- Member of Technical Staff - Data Analytics
m
- se Engineer
- Cal Job Board>>



The measure passed with 68 percent of the vote, barely surpassing the two-thirds majority needed.

The cost of the property tax used to pay for the bonds varies with the assessed value of a person's home. The estimated cost to homeowners would average \$27 per year over the 30-year life of the bond, or two cents per \$100 of a home's assessed value, according to the library's Web site.

"We have one of the best bond ratings so there is no danger that we are going to default on our bonds," said Councilmember Gordon Wozniak, whose district includes the Claremont Branch.

Before the measure was passed, Noll & Tam evaluated the state of the library and prescribed renovations. The evaluation found that the buildings needed renovations in the wiring, plumbing

and ventilation systems, and that in the event of a major earthquake, the buildings would experience a disproportionate amount of damage.

The West Branch would have its original 1923 facade and interior historic details restored. It would also be restructured to add space, including a study room for the literacy program.

Other branches would also receive additional space. The South Branch, for example, would be replaced by an entirely new structure with about 3,000 additional square feet of space.

"This a tremendously exciting time for the Berkeley Public Library, and we are so pleased to be able to offer our community ... library buildings that are even more welcoming and user-friendly," Bern said.

Tags: [BERKELEY PUBLIC LIBRARY](#)

Correction: Wednesday, February 17, 2010

The Feb. 11 article "City's Public Library Branches Face Renovations" incorrectly stated that the Berkeley Public Library North Branch would have its original facade and interior historic details restored and that the branch would be restructured to add a study room under a renovation project. In fact, these changes would apply to the West Branch of the library. The article also stated that the South Branch would have about 3,000 square feet added to its existing 5,000 square feet. In fact, the library would be replaced entirely by a new structure with the additional space.

The Daily Californian regrets the error.

Contact Michael Pearson at mpearson@dailycal.org.

Comments (0) »

Comment Policy

The Daily Cal encourages readers to voice their opinions respectfully in regards to both the readers and writers of The Daily Californian. Comments are not pre-moderated, but may be removed if deemed to be in violation of this policy. Comments should remain on topic, concerning the article or blog post to which they are connected. Brevity is encouraged. Posting under a pseudonym is discouraged, but permitted. [Click here](#) to read the full comment policy.

[Leave a comment](#)

Echo 0 Items

[Admin](#)

Social Networking by

Development and Capital Projects



New Downtown YMCA Will Be Geared Toward Teens

A new YMCA is slated to open in Downtown Berkeley this fall, the first...[Read More»](#)

Advertisements

- [Sugar Daddies](#)
- [Home Services Guide](#)

Would-Be Centennial for Historic, Vanished Newman Hall

By STEVEN FINACOM
Special to the Planet

Many wonderful buildings that once defined the cultural landscape of Berkeley have vanished, recalled today only in photographs and written memories. One such, "an ornament to Berkeley," was the original Newman Hall, a stately Tudor Revival edifice. It was dedicated just off the UC campus in March 1910.

Although the building itself did not survive to centennial age, for decades it was a fixture of its Northside neighborhood, as well as an important intersection of campus and community life. Of all the early denominational religious edifices for students near campus, Newman Hall may have been the best.

The "Newman Club" movement around the country was supported by the Roman Catholic hierarchy and leading laity. They worried as Catholic students increasingly flocked to secular colleges including the University of California. The local branch grew from the patronage of Archbishop William Riordan of San Francisco and the efforts of Roman Catholic faculty and students.

Dean of Agriculture Eugene Hilgard joined with six students in 1899 to discuss forming a Roman Catholic club at Cal. They initially met in rooms at the Golden Sheaf Bakery on Shattuck Avenue. In 1902 the Archbishop formalized their existence. They named themselves for Cardinal John Henry Newman, prominent 19th century churchman and scholar who had converted from Anglican to Roman Catholic.

Reverend John J. Cantwell was designated as part-time chaplain to the fledgling Newman Club. Cantwell—later Archbishop of Los Angeles—also assisted at Berkeley's first Roman Catholic parish, St. Joseph's. He made parish rounds on horseback and, according to Newman tradition, periodically took a break to have a beer with brewer Louis Raspiller on San Pablo Avenue.

Then, as Newman history records, "the growth of the Club and the removal of Father Cantwell from Berkeley in 1904 induced the Archbishop to establish the ministry to the Catholic students of Berkeley on a more permanent and solid basis...the Paulist Fathers agreed to staff a permanent campus ministry in Berkeley."

In 1906, the Paulists—a society of missionary priests, founded in 1858—sent Father Thomas Verner Moore to Berkeley. "The Archbishop commissioned Father Moore to select a suitable site for a club house, and on April 25, 1907, Father Moore brought the Archbishop over to look at the house which was later used as



Photos courtesy Newman Hall, Holy Spirit Parish

Above: A 1959 wedding rite in the upstairs Thomas Aquinas Chapel at Newman. Below: This early 20-century view shows Newman at the corner of Ridge and La Loma.



the rectory and to see the adjoining lot on the corner of Ridge Road and La Loma" a history in the Newman Hall newspaper related in 1924. "The two pieces of property were being offered on sale."

The house, a "magnificent residence,"

was the home of former Judge B. W. Badger and his wife, according to the Berkeley Independent. Although they had just built in 1905 they were selling, the paper said, because Mrs. Badger was ill and chose to return to Montana. They received \$18,000

from the sale of house and adjacent uphill lot, newspapers reported.

"The Archbishop looked over the property and closed the deal, then and there," the Newman history said. Newman took possession Aug. 1, 1907, and Catholic students were soon worshipping at makeshift altars in the downstairs parlors of the big brown shingle house, where staff lived upstairs.

The Newman site was at the northeast of an architecturally prominent block. The private residential hotel Cloyne Court (John Galen Howard, 1904) stood to the west, while College Hall, a private women's dormitory, rose to the south of Newman in 1908-09. Ernest Coxhead's 1893 neo-Tudor Beta Theta Pi fraternity sat diagonally downhill from Newman and completed the main structures on the block.

Even with the acquisition, "one dwelling house is not sufficient to meet the needs of the present situation. It is my intention to build also a Chapel and Lecture Hall," Riordan wrote. "The work...has been seriously hampered and rendered almost impossible by the lack of any home of its own."

Riordan acted quickly. "On the occasion of his silver jubilee (the) Archbishop received a personal gift of \$40,000, from the laity of the Archdiocese. This sum of money he set aside for the erection of the original Newman Hall," combined with other donations.

The building was completed and dedicated March 13, 1910—one hundred years ago, as of this writing.

Shea & Lofquist designed Newman Hall with Frank Shea as lead architect. The firm had organized in early 1906 and designed many commercial and institutional buildings in San Francisco in the building boom following the earthquake and fire.

They designed the new Mission Dolores church, Berkeley's St. Joseph the Workman (now Worker) church, St. Patrick's (now across from Yerba Buena Center) in San Francisco, and Saint Patrick's Seminary in Menlo Park.

They also clearly had an in with the local Catholic hierarchy or, as the Architect & Engineer decorously put it in 1909, "in ecclesiastical architecture Messrs. Shea and Lofquist have been eminently successful."

Arts and Crafts, Beaux Arts, Mission, Gothic and Romanesque Revival architectural traditions were interwoven in their work of this period. Stylistically, Newman Hall was most closely allied with St. Anselm's Church in San Anselmo (still standing) and their Infirmary Building (now Archbishop House) at the Menlo

Continued on Page Eighteen

COMMUNITY CALENDAR

Continued from
Page Six

Black History Month Forum "From Slavery to Mass Incarceration" at 2 p.m. at Rockridge Library, 5366 College Ave., Oakland. Sponsored by the Spartacist League and Labor Black League for Social Defense. 839-0851.

Hike UC Campus and Surroundings, five miles and some modest elevation. Meet at North Berkeley BART Station at 9:15 a.m. robertper7@gmail.com

What's It Worth? An Antiques Appraisal Faire Professional appraisers will tell you the value of that family heirloom, that gizmo from Uncle, the painting from the garage sale, from 2 to 6 p.m. at Albany Middle School, 1259 Brighton Ave., Albany. Cost is \$20 per person for 2 portable items. Extra items \$10 each at the

door. Benefits Albany Rotary Club local and international programs. www.AlbanyCarolina.org/aire

Saturday Afternoon at the Movies View and discuss award winning Independent and foreign films at 3 p.m. at Claremont Branch Library, 2940 Benvenue Ave. To register for this event call 981-6280.

Vegetable Garden Beds Learn how to prepare for spring planting at 10 a.m. at Magic Gardens Nursery, 729 Heinz Ave. www.magicgardens.com

Family Open House at the Freight and Salvage with workshops, jams, and performances from noon to 4 p.m. at 2020 Addison St. www.freightandsalvage.org

King of the Carnival Weekend at Playland-Not-At-The-Beach Sat. and Sun. from 10 a.m. to 5 p.m. at 10979 San Pablo Ave., El Cerrito. Cost is \$10-\$15. 932-8966.

Celebration of Purim, the Jewish costume holiday, for young children, at 10:30 a.m. at Jewish Gateways, 409 Liberty St., El Cerrito. RSVP required. 559-8140.

Free Garden Tours at Regional Parks Botanic Garden Sat. at 2 p.m. and Sun. at 11 a.m. and 2 p.m. Regional Parks Botanic Garden, Tilden Park. Call to confirm. 841-8732. www.nativeplants.org

Lawn Bowling on the green at the corner of Acton St. and Bancroft Way every Wed. and Sat. at 10 a.m. for ages 12 and up. Wear flat soled shoes, no heels. Free lessons. 841-2174.

SUNDAY, FEB. 28

"How We Can Complete the Gaza Freedom March" with Ali Abunimah, co-founder of the Electronic Intifada, at 7 p.m. at King Middle School, 1781 Rose St. Benefit for children in Gaza.

Tickets are \$8-\$15. 548-0542. www.mecatorpeace.org

Tour of the Berkeley City Club, designed by Julia Morgan, from 1 to 4 p.m. at 2315 Durant Ave. Free, donations accepted. www.landmarkheritagefoundation.org

Purim Carnival from 2 to 5 p.m. at the Jewish Community Center, 1414 Walnut St. with activities for children, carnival booths and more. Come in costume. http://prod.jcceastbay.org

Free Garden Tours at Regional Parks Botanic Garden in Tilden Park Sat. at 2 p.m. and Sun. at 11 a.m. and 2 p.m. Call to confirm. 841-8732. www.nativeplants.org

CITY MEETINGS

Mental Health Commission meets Thurs. Feb. 18, at 1:30 p.m. at City Hall, Cypress

Room, 2180 Milvia. 981-7402.

Design Review Committee meets Thurs., Feb. 18, at 7 p.m., at the North Berkeley Senior Center. 981-7415.

City Council meets Tues., Feb. 23, at 7 p.m. in City Council Chambers. 981-6900. www.ci.berkeley.ca.us/citycouncil

Energy Commission meets Wed., Feb. 24, at 6:30 p.m., at the North Berkeley Senior Center. 981-7439.

Planning Commission meets Wed., Feb. 24, at 7 p.m., at the North Berkeley Senior Center. 981-7416.

Mental Health Commission meets Thurs., Feb. 25, at 5 p.m. at 2640 MLK Jr. Way, at Derby. 981-5217.

Zoning Adjustments Board meets Thurs., Feb. 25, at 7 p.m., in City Council Chambers. 981-7430.

ONGOING

Berkeley Housing Authority Five Year Plan and Fiscal Year Plan Public comments are being accepted by email to BHA@ci.berkeley.ca.us or at BHA office, 1901 Frairview St. The plan is available at the office. A Public Hearing will be held April 8 at 6 p.m. at the North Berkeley Senior Center, 1901 Hearst.

Princess Project Donate your gently used prom dresses and accessories to benefit Bay Area high school girls, from Feb. 8 to Feb. 19 at Tootsies in Oakland, 5525 College Ave. For details see www.princessproject.org

Half Pint Library Book Drive Children's books will be collected for distribution to pediatric clinics and community centers. Drop off books through March 31 at Half Price Books, 2036 Shattuck Ave.



BERKELEY PUBLIC LIBRARY

INFORMATION CALENDAR

March 10, 2010

TO: Board of Library Trustees
FROM: Doug Smith, Deputy Director of Library Services
SUBJECT: CELEBRATING NATIONAL LIBRARY WEEK

INTRODUCTION

This report provides an update on National Library Week, which takes place April 11-17, 2010, and the Library activities during this annual commemoration.

FISCAL IMPACT

This report has no fiscal impacts.

BACKGROUND

National Library Week is an annual celebration of the contributions of our nation's libraries and librarians. First sponsored in 1958, National Library Week is a national observance sponsored by the American Library Association (ALA) and libraries across the country each April. All types of libraries - school, public, academic and special - participate. The theme for 2010 is "Communities Thrive @ Your Library", and libraries across the nation look for ways to raise awareness about libraries and library services during this week. This theme is especially appropriate this year, reflecting how many citizens are turning to their public libraries for assistance and solace during times of economic distress.

CURRENT SITUATION AND ITS EFFECTS

At the Berkeley Public Library, people of all backgrounds come together for community meetings, lectures and programs, to do research with the assistance of a trained professional, to get help finding a job, to learn to read, or to find homework help. Each April, the staff of the Berkeley Public Library devotes activities and programs in honor of this important recognition of how libraries everywhere play a vital role in supporting the quality of life in their communities. This year, Library staff are launching the first of a planned annual patron satisfaction survey, to monitor what the Library's users think of the library services they receive, and to receive feedback on potential areas of improvement. This annual survey instrument (Attachment 2) will augment ongoing planning efforts on the part of Library staff.



Additionally, the California Library Association is scheduling National Library Week visits with legislators in their local district offices throughout the state. These “Day in the District” meetings will provide a great opportunity to educate our legislators and their aides about the importance of libraries within their respective jurisdictions. Staff of the Berkeley Public Library will be participating with other Bay Area library advocates, meeting at the offices of local assemblypersons and state senators.

FUTURE ACTION

No future action is required.

Attachments:

1. Berkeley Public Library Survey



BERKELEY PUBLIC LIBRARY SURVEY

During National Library Week, the Berkeley Public Library assesses the quality of its services. Please help us serve the community better by completing this anonymous survey. Thank you for taking your time to provide your library with valuable feedback.

1. How often do you use the Berkeley Public Library?

- Daily
- Weekly
- At least once a month
- A few times a year
- Never

If you answered "never", please explain why: _____

2. Do you have a library card issued by this Library?

- Yes
- No

3. Why do you visit the Library? (check all that apply)

- | | |
|---|---|
| <input type="checkbox"/> Check out books | <input type="checkbox"/> Use meeting room(s) |
| <input type="checkbox"/> Use computers or wi-fi | <input type="checkbox"/> Study/research |
| <input type="checkbox"/> Check out cds | <input type="checkbox"/> Meet with friends |
| <input type="checkbox"/> Read newspapers or magazines | <input type="checkbox"/> Attend adult programs |
| <input type="checkbox"/> Check out audio books | <input type="checkbox"/> Attend children's programs |
| <input type="checkbox"/> Check out tools | <input type="checkbox"/> Other |
| <input type="checkbox"/> To print or make copies | |

4. When you visit the Library, are you able to find what you are looking for?

- Always
- Frequently
- Sometimes
- Seldom
- Never

5. How likely is it that you would recommend this Library to your friends? Please rank your response on a scale of 1 to 10, where ten means "extremely likely", five means "neutral", and one means "not at all likely".

- | | |
|----------------------------|-----------------------------|
| <input type="checkbox"/> 1 | <input type="checkbox"/> 6 |
| <input type="checkbox"/> 2 | <input type="checkbox"/> 7 |
| <input type="checkbox"/> 3 | <input type="checkbox"/> 8 |
| <input type="checkbox"/> 4 | <input type="checkbox"/> 9 |
| <input type="checkbox"/> 5 | <input type="checkbox"/> 10 |

6. How helpful was the Library staff the last time you visited?

- Extremely
- Very
- Somewhat
- Not very helpful
- Not at all helpful

7. Please rate your satisfaction with each of the following Library services:

Service	Very Satisfied	Satisfied	Dissatisfied	Very Dissatisfied	Don't know
Collection (books, magazines, audios, DVDs, etc.)					
Reference Service					
Hours open					
Link+ loans					
Public internet computers					
Children's programs					
Adult programs					
Electronic Resources (databases)					
Web site (berkeleypubliclibrary.org)					

8. How do you find out about the Library's programs and services? (check all that apply)

- Newspaper
- In-Library flyers and signs
- Library staff
- Library web site
- Friends/Neighbors
- Local broadcast/print Media
- Other: _____

9. If there is one thing that you could change about the Library, what would it be?

10. Are there any comments you would like to provide concerning the Library, its services, staff, collections, and/or programs?

OPTIONAL:

The following information will be used for demographic purposes only. Please provide information for the person completing the survey.

- Male
- Child(up to age 12)
- Adult (20-54)
- Female
- Teen (13-19)
- Senior (55+)

Thanks for completing the Berkeley Public Library survey!



BERKELEY PUBLIC LIBRARY

INFORMATION CALENDAR

March 10, 2010

TO: Board of Library Trustees

FROM: Suzanne Olawski, Branch Libraries Services Manager

SUBJECT: MEASURE FF: BRANCH IMPROVEMENT PROGRAM - BOOKMOBILE OPTION FOR CONTINUITY OF SERVICES DURING BRANCH CLOSURES

SUMMARY

The Library is exploring service opportunities – continuity of services – to offer during branch closure periods as a result of construction activities to occur.

CURRENT SITUATION AND ITS EFFECTS

The branch libraries will be closing for construction activities arising out of the voter approved Measure FF Branch Libraries Improvement Program; and it is expected that regular branch library services will cease during this period. Branch patrons have expressed concerns about the hardship imposed by the impending branch closures with particular concern to procurement of reserve items. In response, the Board has expressed a desire for the Library to explore the option of bookmobile services to the affected neighborhoods.

BACKGROUND

Bookmobiles come in a variety of sizes and during the course of research the Library learned that a new, full-sized 42' bookmobile with wheelchair access can cost upwards of \$250,000; therefore, the Library expanded its search to the pricing of smaller bookmobile vans. The Library communicated directly with several reputable bookmobile vendors, and two, Farber Specialty Vehicles and Matthews Specialty Vehicles, provided baseline quotes for a 22' bookmobile van. The base cost, including delivery and full training, for a Farber Specialty Vehicles Sprinter bookmobile is \$75,000. The base cost for a Matthews Specialty Vehicles 22' Series 500 Sprinter Book Hauler, including delivery and 5-speed automatic transmission, is \$67,000. Taxes, tags and fees are not included in the base prices. Delivery is projected at seven (7) to eight (8) months from receipt of order for a standard outfitted vehicle, with some customized features possibly extending delivery times. Leasing in lieu of outright purchase is being explored; but as yet the Library has not received any substantive information to report.

Alternatively, the Library wrote to library directors throughout the state asking if they would be interested in leasing or selling one of their inactive bookmobiles in excellent condition to the Library. There have been no responses received to date.

Some of the issues surrounding mobile services include licensing, insurance, parking, fuel costs (diesel), maintenance, and compliance to CA emission standards.



Budget-wise the Library has not budgeted for mobile services either in the Library Tax Fund operating budget or the dedicated Measure FF bond funds. Should the Library seek to pursue the provision of mobile services it is likely that daily vehicle operational costs such as staffing, vehicle maintenance and fueling would be paid for through the Library Tax Fund while vehicle purchase costs would be funded through Measure FF bond sale receipts. Additionally, any funding drawn from the Library Tax Fund to address personnel and non-labor expenditures would be occurring within the context of constrained revenues, and escalating labor and healthcare costs, and undetermined increases to CalPERS; and vehicle purchase monies, an unplanned expense as previously mentioned, would constrain the already limited Branch Libraries Improvement Program budget.

In an effort to determine the necessary procedures to procure a vehicle the Library contacted the City's Purchasing department and was advised that it is likely that any procurement effort as well as ongoing vehicle maintenance and servicing would need to be conducted by and coordinated with Public Works – Fleet Management. Consequently the Library did enquire with Fleet Management and is still awaiting a response.

Staffing of a vehicle, although currently undetermined, is an issue that would involve multiple functions encompassing daily vehicle retrieval and end-of-day storage drop-off, fueling, loading and unloading of the day's library materials, and transiting to scheduled fixed parking points at neighborhood locations. It is envisioned that scheduled services would be limited at any one location with regularly fixed hours to ensure a degree of certainty for community patronage – weekend mobile services are not being considered due to lack of weekend access to the City's corporation yard where the vehicle would be parked.

FUTURE ACTION

If the Board directs staff to pursue a vehicle purchase an action item will be presented for further discussion and possible approval.

To: City of Berkeley Board of Library Trustees
90: City Head Librarian
Re: West Berkeley Branch Renovations
Date: February 8, 2010

To the Berkeley City Library Board of Trustees:

At the meeting held on February 6 at the West Berkeley branch, further comment on the 3-scheme proposal by Harley et al was invited. In advance of your meeting wednesday evening (the 10th), i would like to submit the following:

- unless projected growth needs (eg, unanticipated nature of future forms of information-retrieval) strongly militate in favor, i'm not really much for a second story. Besides, its service volume (stairs, lift, firepole) would snatch away ground-floor area. And, the 2nd-floor use is minimal - what?, one ancillary library service?
- the expense involved under scheme A in moving the 1923 building - apparently, not landmarked - forward and lower on the lot - seems rather inordinate, and the effort so time-consuming, if not obscene.

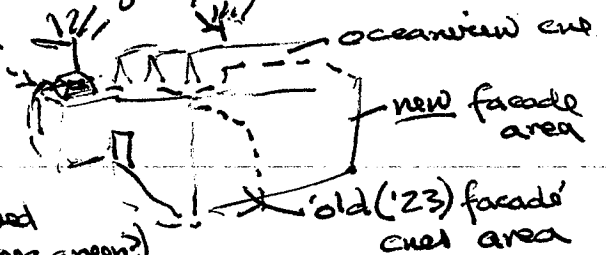
My major concern, upon learning West Branch renovation was afoot, was in restoring the 1923 structure to prominence. Given space & cost realities, as outlined on Saturday, obliged me to rethink matters.

First, the "givens": the '23 building's archi-visual features are large ^{oh, the skylight.} multi-pane windows; an unfortunate door; incised lettering; bas-relief medallions; pilasters; projected base and 'frieze' bands; finally, an originally suggested or mandated exterior color-scheme.

Since we were told that scheme B placed a visual cue for 'Oceanview' w/ a sawtooth skylighting treatment, perhaps the design features listed above could be incorporated in the exterior as well → one cue for the area, and a clutch of them for the branch's part.

The prominence of south-facing windows in all 3 plans was mentioned, and the use of the surviving medallion. A referential skylight might work, although w/ the sawteeth? I dunno.

Another way of seeing what i'm saying might be:



- Assorted: the finished piece should say "Oh, yeah?" to the lumbering/intimidating crap around it
- do try to find what exterior colors were used in '23 (marshmallow white? - so typical, or pea green?)
- hope the trees stay, the northern neighbors are placated, and that there are no dead spaces (as in 'forgotten') around the perimeter.

All else is forgotten.

Sincerely -

Phil Allen
2094 Curtis, Berkeley '02
allen.phil@ypano.com
848-2214

To: Donna Corbeil, Library Director
cc: Board of Library Trustees

February 8, 2010

From: Tom Dufour, Librarian II

Dear Ms Corbeil,

I am writing to thank you for including me, as a member of SEIU 1021, on the Library's Self-Check and Materials-Security Taskforce, where we worked to prepare a request for proposals to replace our current 3M RFID system. The taskforce did a thoroughly professional job, including careful study of available features, interviews with several vendors, and site visits to other libraries using different circulation systems. I believe the request for proposals fully reflects the Union's concerns with employee safety, workloads, and morale.

Sincerely,

Tom Dufour
Librarian II
Berkeley Public Library

